

FACTORY AUTOMATION

Graphic Operation Terminal MELHMI GOT3000 Series



**Smooth.
Seamless.
Smart.**

BEYOND HMI, NEW GOT DEBUT

GOT3000



Our Factory Automation business is focused on "Automating the World" to make it a better, more sustainable environment supporting manufacturing and society, celebrating diversity and contributing towards an active and fulfilling role.

Mitsubishi Electric is involved in many areas including the following:

Energy and Electric Systems

A wide range of power and electrical products from generators to large-scale displays.

Electronic Devices

A wide portfolio of cutting-edge semiconductor devices for systems and products.

Home Appliance

Dependable consumer products like air conditioners and home entertainment systems.

Information and Communication Systems

Commercial and consumer-centric equipment, products and systems.

Industrial Automation Systems

Maximizing productivity and efficiency with cutting-edge automation technology.



The Mitsubishi Electric Group is actively solving social issues, such as decarbonization and labor shortages, by providing production sites with energy-saving equipment and solutions that utilize automation systems, thereby helping towards a sustainable society.

INDEX

Lineup	4
GOT3000 Features	7
The Smoothest and Most Beautiful GOT Ever	8
Overcoming Network Barriers	10
Engineering with Ease	14
GOT Solutions	19
Remote Solutions	20
Maintenance Solutions	24
MELSEC Interactive Solutions	26
GOT Drive Control Interactive Solutions	28
Function List	32
Specifications	34
Dimensions	36
Product List	38
Support	41

Lineup

The Optimal HMI for Your Equipment

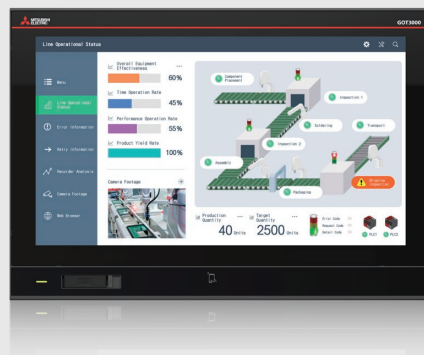
HMI

GT37 Wide

NEW

Projected Capacitive (PCAP)
Touch Panel

DC



NEW SIZE

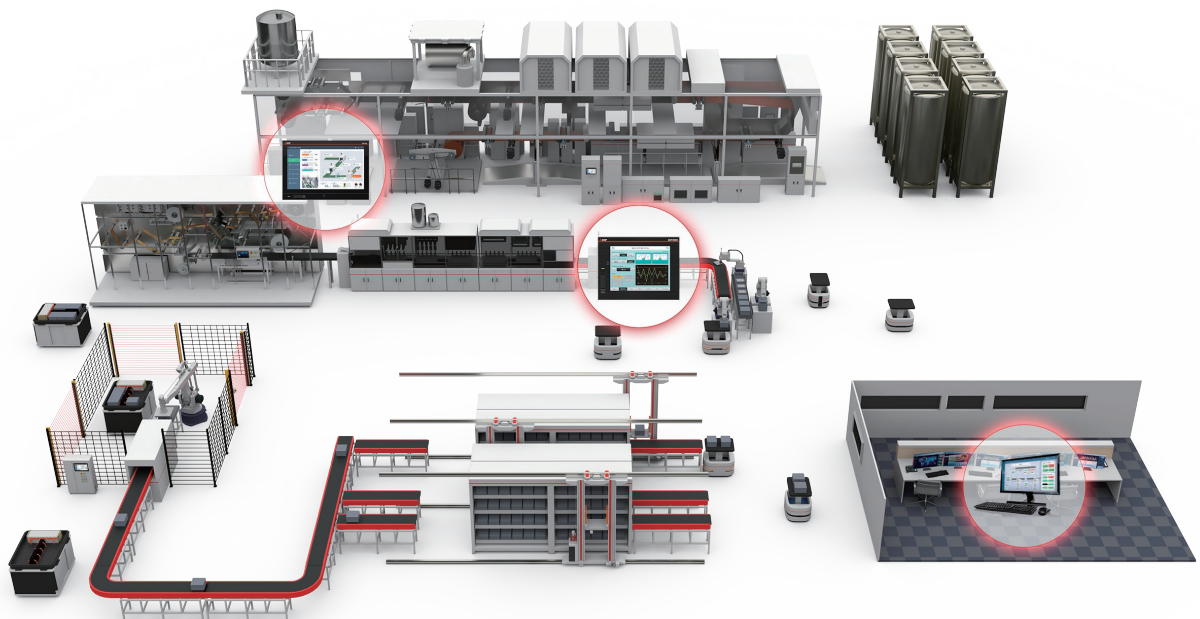
15.6" Wide Full HD

GT3715-FHCBD



12.1" Wide WXGA

GT3712-WXCBD





Ethernet 2 Channels	RS-232/422/485	NEW USB Device/Host USB Type-C	USB Host USB Type-A	NEW Contactless Tag
NEW Digital Video Output	SD Memory Card	Extension Interface	RAM (User Memory) 2 GB (768 MB)	ROM (User Memory) 512 MB (256 MB)

GT37

Analog Resistive
Touch Panel

AC

DC



12.1" XGA Human Sensor
GT3712-XRBA
GT3712-XRBD



10.4" XGA
GT3710-XRBA
GT3710-XRBD



8.4" XGA
GT3708-XRBA
GT3708-XRBD

Manage both GOT and production sites
from your computer

HMI Software

GT SoftGOT3000

License required*

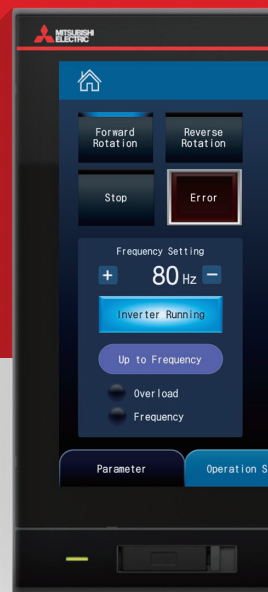
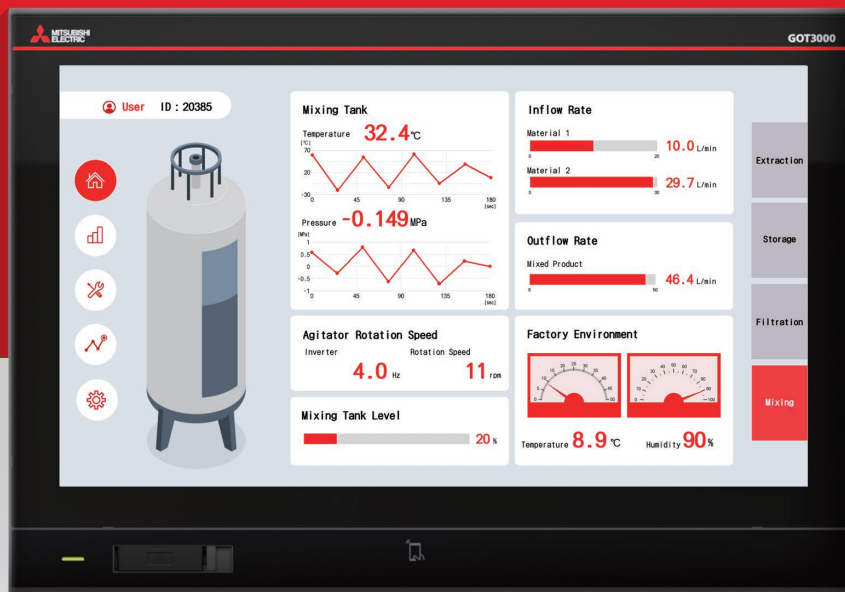
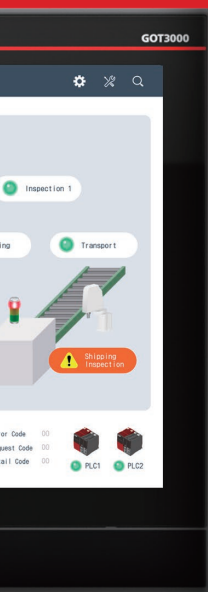
Monitor equipment and production line information
from your office computer.

[Go to page 23 >>](#)



* A license key (for the USB port) is no longer needed. The license is now registered electronically.

Smooth. Seamless. Smart.



Accelerate digital transformation on your site:
Refined technology and continuous evolution
connect people, systems, and IT even more strongly.

INTERFACE

The Smoothest and Most Beautiful GOT Ever

The high-definition touch panel improves operability, achieving universal usability and visibility.

————— [Go to the next page >>](#)



NETWORK

Overcoming Network Barriers

Achieve high-level security and FA data integration and collection by using GOT as an IoT gateway.

————— [Go to page 10 >>](#)

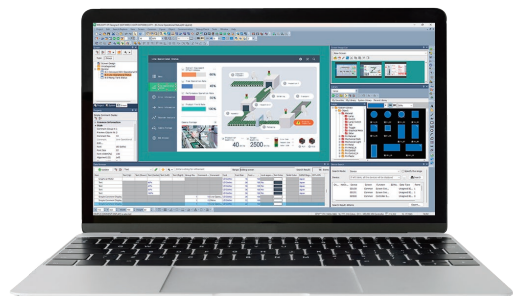


ENGINEERING

Engineering with Ease

With new features and retained operability, the user-friendly software robustly supports screen design and the replacement of existing models.

————— [Go to page 14 >>](#)



GOT3000

INTERFACE

The Smoothest and Most Beautiful GOT Ever

The clear and beautiful display offers smooth operability

High-Definition, Rich Color Display

A vibrant, Full HD 15.6" widescreen display with 16 million colors.

Projected Capacitive (PCAP) Touch Panel

A durable and robust glass screen with high transparency and a light touch.
[GT37 Wide only]



Universal Design Fonts

Easily recognizable fonts are supported.

Frame Animation

Visual effects and motion elements bring objects to life.

Pinch-in/Pinch-out

It is operable just like a smartphone. [GT37 Wide only]

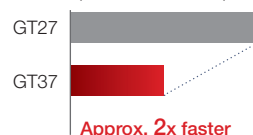
Faster startup and improved monitor (communication and drawing) performance

Parallel processing by the built-in multi-core CPU shortens startup time and ensures smooth screen operation, even during high-load processes such as logging, scripting, and alarm management.

Startup time comparison*1



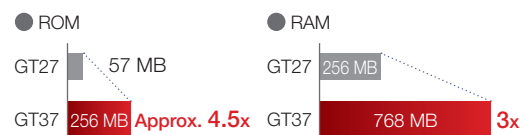
Monitor performance comparison*2



Expanded user memory capacity

Reliable memory capacity allows project data to be saved without worrying about storage limitations.

User memory capacity comparison



*1 Results from our company's test environment.

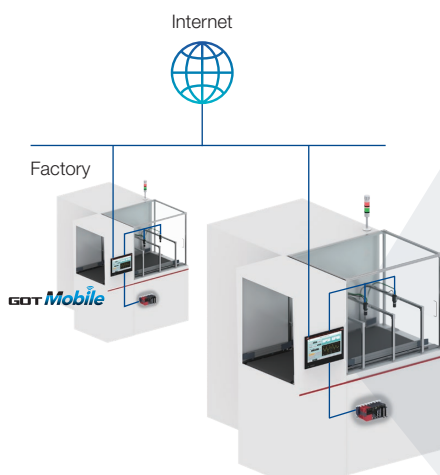
*2 Results from our company's test environment (during high-load processing).

Configure and monitor controllers with GOT

NEW

Web Browser Function

GOT3000 enables you to monitor and configure controllers that have a web server function. It also supports browsing websites.




Internet


Factory

GOT Mobile

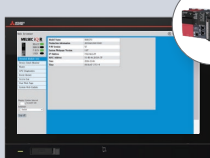
Examples of utilizing Web Browser Function



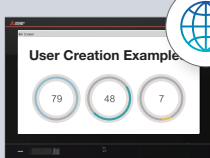
Other GOTs monitoring
(GOT Mobile function)



Website



Programmable controller diagnosis
Batch device monitoring



HTML, CSS, JavaScript

For devices that have been tested for compatibility, please refer to the technical bulletin No. GOT-A-0249.

Easier Andon display

NEW

Built-In Digital Video Output Interface

- With a single HDMI cable, display GOT screen on a large monitor.
- Displaying a screen different from the GOT screen is supported.
- It can be used for Andon system information sharing.

Display footage output via direct connection

HDMI cable

GOT3000

Large monitor

Check the camera footage on the control panel

NEW

Direct Web Camera (USB Camera) Connection

- A camera can be connected with a single USB cable, allowing the live feed to be displayed on GOT.
- With the recording and playback function^{*1}, verify machine conditions through camera footage when problems occur. [Future Support]

^{*1} A separate license purchase is required.

Camera footage output via direct connection

USB cable

Web camera

GOT3000

Add-on projects (sample screens) are also available for immediate use.

→ See page 17 for details

9

NETWORK

Overcoming Network Barriers



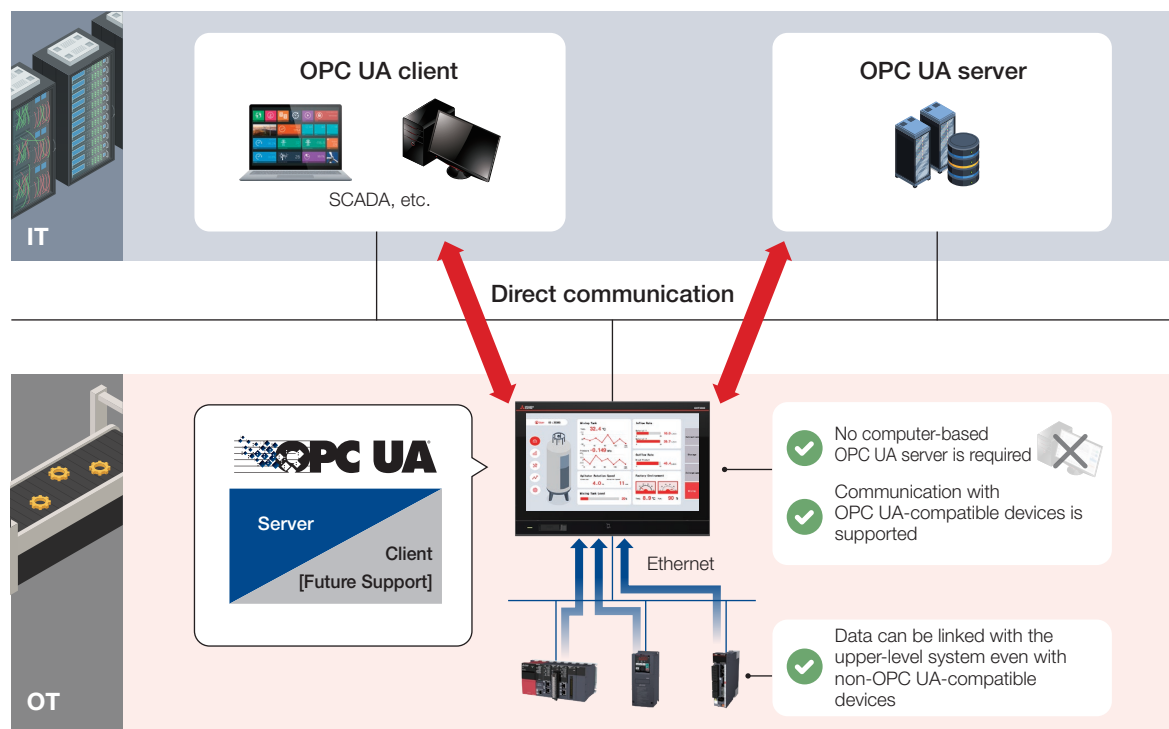
Enabling IoT for equipment using GOT as a gateway to IT systems

NEW

OPC UA Server Function

OPC UA Client Function [Future Support]

- With the built-in OPC UA server, GOT3000 serves as a gateway, enabling data integration between IT and OT systems.
- Secure communication between IT and OT systems can be achieved.



Connectable with various devices, enabling smooth monitoring

NEW

Contactless Tag

When using GOT Mobile function, just tap the mobile device to read the necessary information for connection and start monitoring.

GOT Mobile



Tag reader

→ See page 21 for details

NEW

USB Type-C (Device/Host)

A computer or USB devices can be connected.
Project data can be transmitted without opening the control panel.



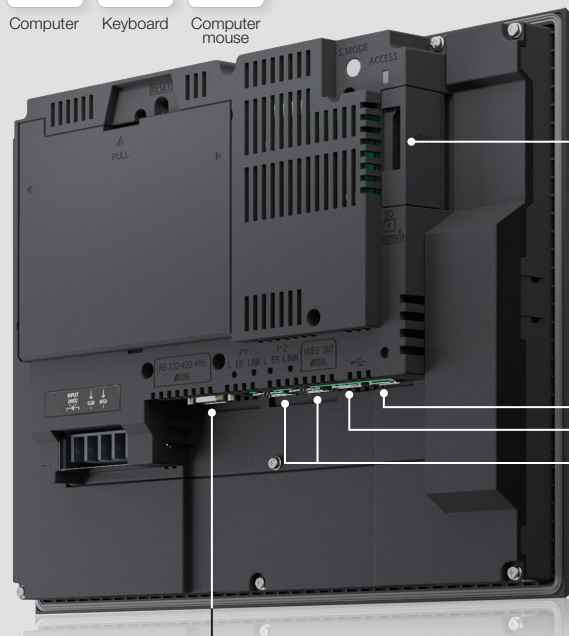
Computer



Keyboard



Computer mouse



Serial (RS-232/422/485)

FA Devices*1



Mitsubishi/Non-Mitsubishi programmable controllers



Inverter



Servo



Temperature controller



SD Memory Card Interface

Data area can be expanded with an SD memory card.

USB Type-A (Host)

USB-compatible devices can be connected.



Keyboard



Computer mouse



Barcode reader



Web camera



Speaker



USB memory stick

NEW

Digital Video Output

Output the GOT screen by connecting it to an external monitor with an HDMI cable.

NEW

Ethernet (1000BASE-T) CC-Link IE TSN OPC UA

Two ports come as standard.

CC-Link IE TSN (Class A) is supported for Port 1 only.

FA Devices



Mitsubishi/Non-Mitsubishi programmable controllers



Inverter

Servo

Ethernet Connectable Devices



Computer



Server

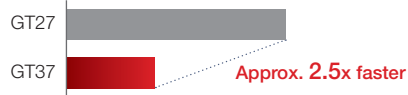


IP camera*2

High performance monitoring

Performance for monitoring multiple devices has improved, enabling stress-free monitoring.

Monitor performance comparison
(when multiple devices are connected via Ethernet)*3



Fast project data transfer



Transfer time comparison (via USB Type-C)*3



*1 Only MODBUS/RTU devices are supported for now. Other devices are Future Support.

*2 Future Support.

*3 Results from our company's test environment.

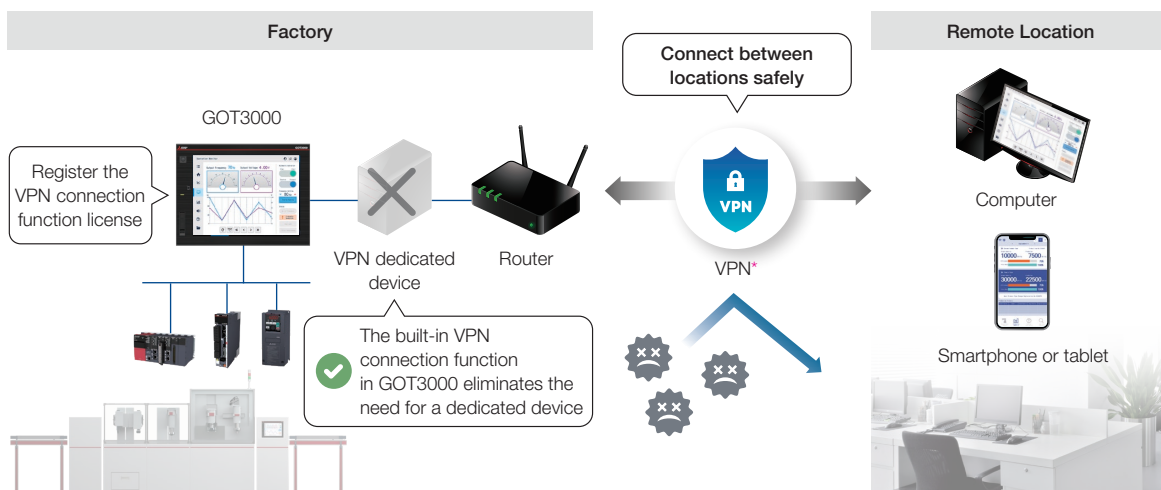
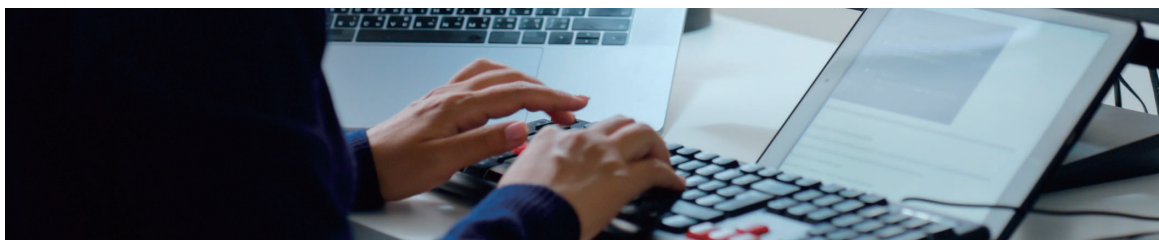
Build a secure network environment at a low cost

NEW

VPN Connection Function

License required

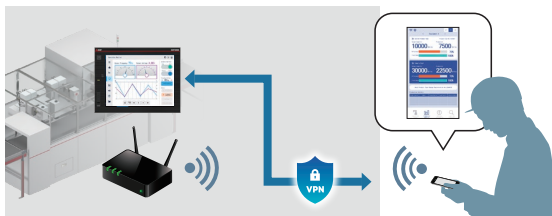
- Highly secure communication is achieved with VPN connection when monitoring or maintaining equipment remotely through the Internet.
- The built-in VPN functionality in GOT3000 eliminates the need for a dedicated VPN device, enabling cost-effective, secure remote monitoring.



* Based on a Secomea A/S remote access solution and requires a separate contract with Secomea A/S.

Access with Ease & Peace of Mind

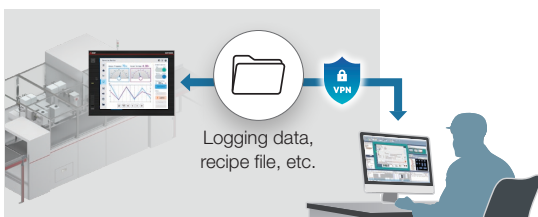
● Easily Conduct Remote Monitoring



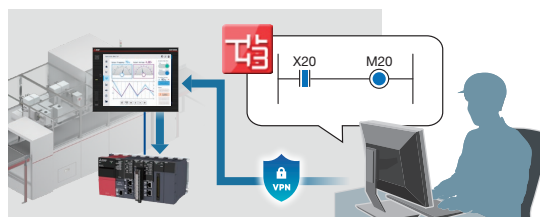
● Securely Update Project Data



● Safely Read/Write Resource Data



● Seamlessly Remote-Monitor Mitsubishi FA Devices



Enhance equipment security

Protect equipment by using GOT3000's various security features.



! GOT data tampering, information leaks

🔒 Data Protection

» NEW Information Protection Function

Protect confidentiality by setting passwords for files that are information assets, such as logging data and operation log data.

This restricts unauthorized third parties from accessing or modifying files.

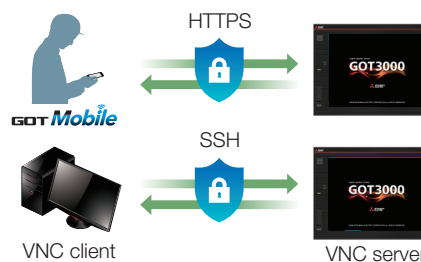
» NEW Encrypted Communication

Encrypted communication between the computer (GT Works3) and GOT prevents the leakage of assets such as project data.



» NEW Enhancing Remote Connection Security

GOT Mobile function and the VNC server function now support encrypted communication. Secure remote access is possible through an encrypted communication path.

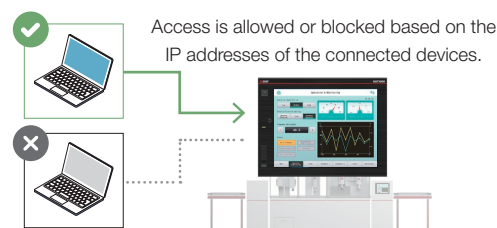


! Unauthorized access to GOT through network

🔒 Network Protection

» IP Filter Function

Access from specified IP addresses can be allowed or blocked.

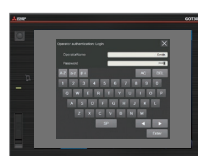


! Unauthorized operation on GOT Screen

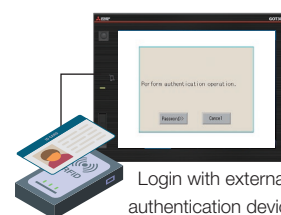
🔒 Operation Limitation

» Operator Authentication Function

- The screens and functions available for operation and display can be restricted for each operator.
- Login can be managed with GOT.



Login with operator's name and password

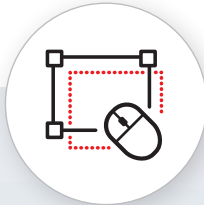


RFID reader

Login with external authentication device

ENGINEERING

Engineering with Ease



Screen Design



Debug

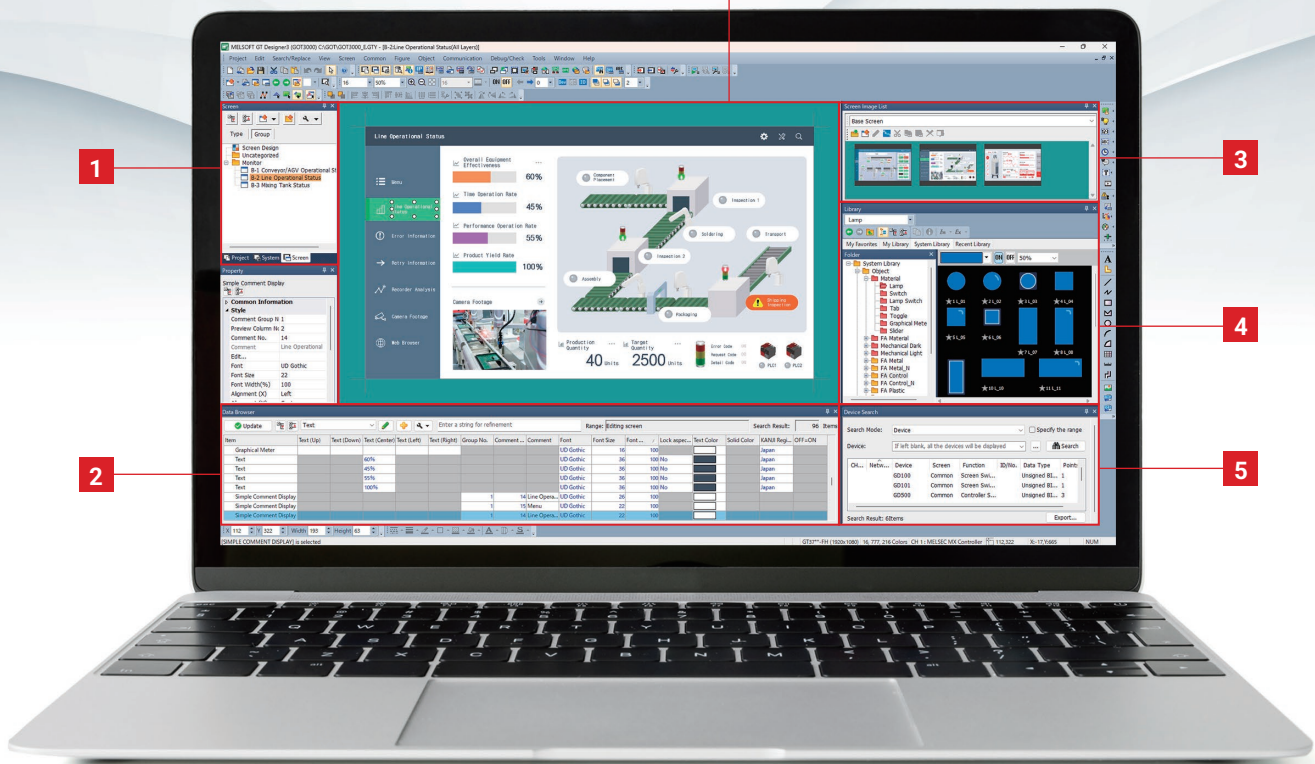


Reuse



Management

GOT Screen Design Software MELSOFT GT Works3



1 Work Tree

Manage and configure for each screen, system, and project.

3 Screen Image List

View each screen as an image, making screen search simple.

2 Data Browser

Directly view and edit properties of multiple objects across the entire project.

4 Library

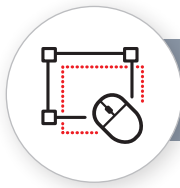
Create professional screens using a wide variety of parts and frame animations.

5 Device Search

Quickly search for the devices and labels in use.

6 Screen Editor

Design efficiently with various functions that minimize man-hours in screen creation.



Screen Design

Choose from abundant and beautiful parts

Ver. UP

Library

- **NEW** Many new parts in vector format have been added. Vector parts can be specified in full color, and their quality remains consistent even when zoomed in and out. Additionally, the file size remains small even with large parts.
- **NEW** Frame animation is supported, making it easier to convey information. In addition to the frame animations registered in the library, other animation files (PNG, APNG, GIF) can also be imported.

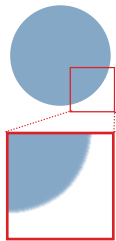
Before

Raster format

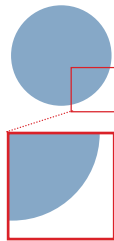
NEW

Vector format

Examples of new parts



Zoomed in



Zoomed in

With the vector format, edges are displayed with clean lines regardless of size

Material



FA Material



Mechanical Dark



Mechanical Light



Frame Animation



Design efficiently with batch editing

Ver. UP

Data Browser

- All the settings within the project can be displayed collectively and edited directly. This allows efficient review and modification of data, even if there are many screens or settings.
- **NEW** By changing and switching the display items of the data browser using presets, you can design efficiently. For example, you can switch to a screen-specific preset when editing screen settings, and to a text-specific preset when modifying text settings. Users can also create custom presets.

Presets for screens

Item	Screen	Screen Group	Title	Detailed Description	Security	Individual Setting of Screen	Background Color Spec...	Background Color
Base Screen	B-20000	1.Parameter Setting	Basic	This screen allows setting...	0 Yes	Yes		
Base Screen	B-20010	1.Parameter Setting	Gain/Filter	This screen allows setting...	0 Yes	Yes		
Base Screen	B-20020	1.Parameter Setting	Extension	This screen allows setting...	0 Yes	Yes		
Base Screen	B-20030	1.Parameter Setting	I/O	This screen allows setting...	0 Yes	Yes		
Base Screen	B-20040	1.Parameter Setting	Extension 2	This screen allows setting...	0 Yes	Yes		
Base Screen	B-20050	1.Parameter Setting	Extension 3	This screen allows setting...	0 Yes	Yes		
Base Screen	B-20060	1.Parameter Setting	Motor Extension	This screen allows setting...	0 Yes	Yes		

Presets for texts



Design efficiently by switching the presets

Item	Text (Up)	Text (Down)	Text (Center)	Text (Left)	Text (Right)	Group No.	Comment No.	Comment	Font	Font Size	Font ...	Lock aspe...	Text Color	Solid Color	KANUI Regi...	Off=ON
(a) Switch (State OFF) (Action1)						245	203	Extension	UD Gothic	20	100					No
(a) Switch (State OFF) (Action1)						245	211	I/O	UD Gothic	20	100					No
(a) Switch (State OFF) (Action1)						245	212	Extension 2	UD Gothic	20	100					No
(a) Switch (State OFF) (Action1)						245	213	Extension 3	UD Gothic	20	100					No
(a) Switch (State OFF) (Action1)						245	214	Motor Extension	UD Gothic	20	100					No
(a) Switch (State OFF) (Action1)						245	215	Positioning	UD Gothic	20	100					No
(a) Switch (State OFF) (Action1)						245	216	Network	UD Gothic	20	100					No

Enhanced copy function

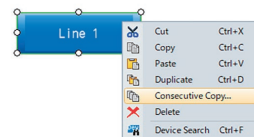
Ver. UP

Consecutive Copy

- Multiple figures and objects can be copied at once.
- When copying, information such as device numbers can be incremented based on the original data, reducing the effort of reconfiguration.

[Increment-Supported Items]

- » Device Number
- » Comment Group No.
- » Comment No.
- » User ID
- » Move Destination ID
- » **NEW** Array Element Count



Increment comment No.
and device No.

No re-setting
required



Efficient scripting

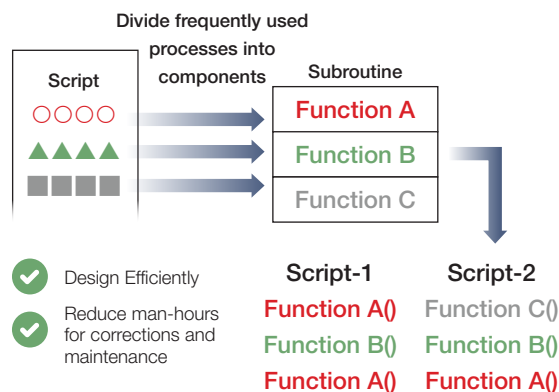
NEW

Subroutine of the Script

A process can be divided into reusable components (subroutines). By using these subroutines, development becomes more efficient.

Script:

A language-type program similar to C language, capable of controlling the display of GOT.



Debug

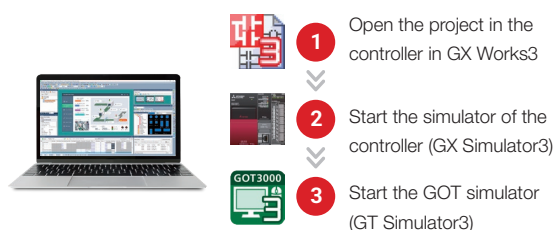
Debug from your desk even without GOT unit

Ver. UP

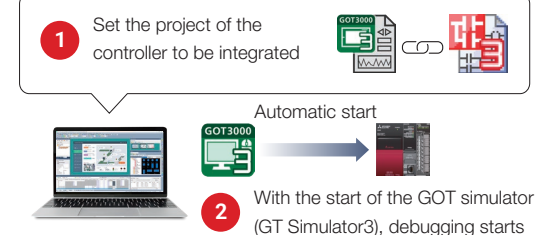
Simulator (GT Simulator3)

- Operations of GOT can be simulated on a computer using the simulator (GT Simulator3).
- By specifying the project of the controller to be integrated in advance in the GOT project, the simulator of the controller (GX Simulator3) will automatically start when you start the GOT simulator (GT Simulator3), allowing you to begin debugging immediately.

Before Without link



NEW With link



Once integrated, project data is automatically integrated every time.

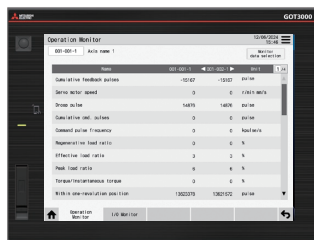


Reuse

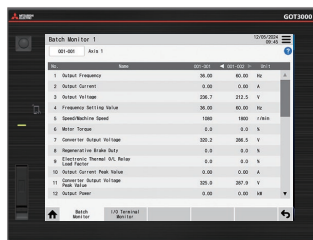
Reuse to reduce design man-hours

Add-on projects (sample screens) ready for immediate use are provided, featuring designs with excellent visibility and usability.

Add-On Project for Connections → See page 28 for details

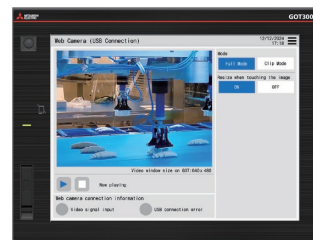


Servo amplifier connection (MR-J5-G)



Inverter connection (FR-E800-E)

Add-On Project for Functions



Web camera (USB connection)

GOT Drive

GOT Drive

* For the latest add-on projects, please contact your local sales office.

Reuse the project assets easily

Utilize Data

Existing project data for GOT3000 is reusable on a project or screen basis.



Reuse



Management

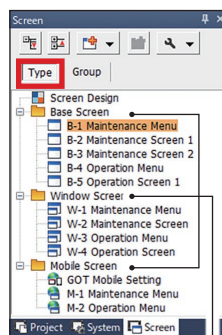
Manage projects easily

Ver. UP

Screen Tree

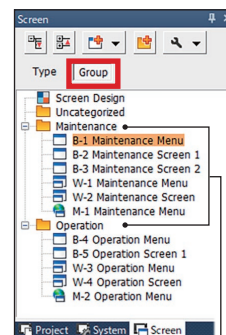
- It is possible to display a list of created base screens, window screens, and mobile screens, and to create new ones or edit existing ones.
- NEW** Group related screens together to keep the project organized.

Display by screen types



Displayed by base screen, window screen, and mobile screen

Display by screen groups



Grouped by maintenance, operation and other categories

Display by switching tabs

Easy machine upgrades



Entirely Replaceable Without Spending Many Man-Hours

Project data for GOT2000 is reusable

Convert GOT2000 data to GOT3000 data

The panel cut dimensions of the replacement model are compatible

Extension units and connection cables are reusable

Benefits of Replacement

- The high-quality display enhances visibility and information accuracy.
- Enhanced functionality allows for the adjustment and monitoring of controllers without a computer, improving maintainability.
- Faster monitoring response, communication, and startup.
- Gain peace of mind with many security features.

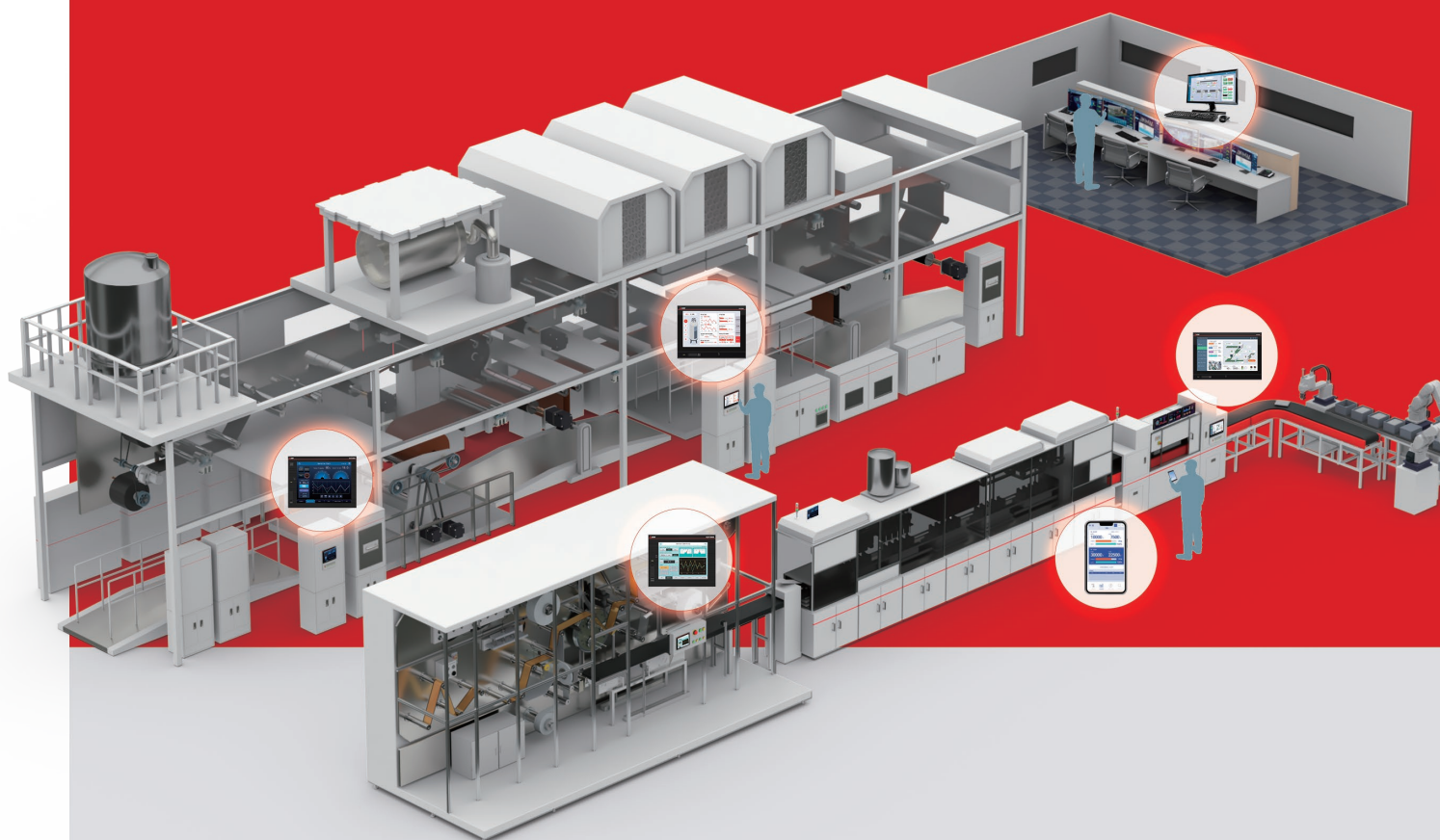
Panel cut compatibility with GOT2000 series

GOT3000 series has the same screen size and panel cut dimensions as the GOT2000 series, so no changes to the mounting holes are necessary.

GOT3000 Series		GOT2000 Series
15.6" widescreen	GT3715-FHCBD	—
12.1" widescreen	GT3712-WXCBD	Same dimensions as GT2712 and GT2512-S.
12.1"	GT3712-XRBA, GT3712-XRBD	Same dimensions as GT2712 and GT2512-S.
10.4"	GT3710-XRBA, GT3710-XRBD	Same dimensions as GT2710, GT2510-V, and GT2310.
8.4"	GT3708-XRBA, GT3708-XRBD	Same dimensions as GT2708, GT2508, and GT2308.

Regarding the replacement, there are some precautions.
For details, please refer to the technical bulletin No.GOT-A-0239.





GOT Solutions

INDEX

Remote Solutions

	P.20
GOT Mobile Function	P.21
Mobile application Pocket GOT	P.21
VNC Server Function	P.22
Remote Personal Computer Operation (Ethernet) Function [Future Support]	P.22
HMI Software GT SoftGOT3000	P.23
Multi-Channel Function	P.23
SoftGOT-GOT Link Function [Future Support]	P.23

Maintenance Solutions

	P.24
Operation Log Function	P.24
Sound Output Function	P.24
Speech Synthesis Function (GT Designer3)	P.24
FA Transparent Function	P.25
Equipped with Non-volatile RAM	P.25
Backup/Restore Function [Future Support]	P.25

MELSEC

Interactive Solutions

	P.26
Web Browser Function	P.26
Sequence Program Monitor Function [Future Support]	P.26
System Launcher Function [Future Support]	P.27
MELSEC iQ-R Camera Recorder Module Connectivity [Future Support]	P.27

GOT Drive Control

Interactive Solutions

	P.28
Servo	P.28
Inverter	P.30

GOT Solutions

Remote Solutions

Improve work efficiency from startup to maintenance with remote monitoring.

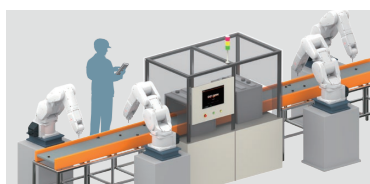


Monitor according to your requirements

Monitor the site with remote visualization solutions suited for your application.

Application examples

Startup and Adjustment



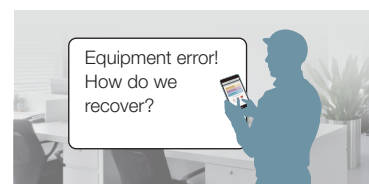
Adjusting the equipment remotely, away from the control panel

Operation

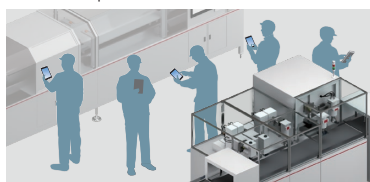


Visualizing with a large screen

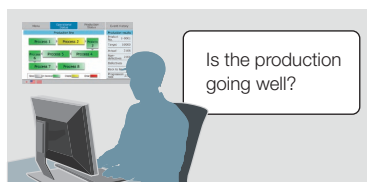
Maintenance



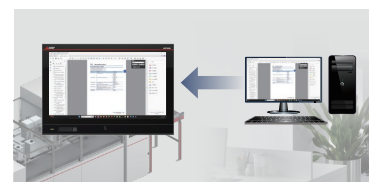
Checking from remote locations



Multiple people working simultaneously



Checking from the office



Equipment recovery while consulting the manual on the computer

Remote monitoring comparison

●: Supported —: Not supported

Item	Monitor and Operate GOT3000 or GT SoftGOT3000 from a Computer or a Mobile Device				Monitor and Operate Computer from GOT
	GOT Mobile Function		VNC Server Function	SoftGOT-GOT Link Function [Future Support]	Remote Personal Computer Operation (Ethernet) Function [Future Support]
	GOT	SoftGOT			
Simultaneous Client Connections	Max. 5	Max. 15	1	Max. 7*1	—
Display Different Screens for each Client	●	●	— Display GOT screen as is	●	—
Simultaneous Operation Prevention (Exclusive Control of Operational Authority)	●	●	●	●	—
Screen Creation for Remote Monitoring	Required*3		Not required	Not required	—
Viewing Application	Web browser		VNC viewer*2	SoftGOT	GOT screen
License	Register to GOT	Register to SoftGOT	Register to GOT	Register to SoftGOT*4	Register to GOT

*1 Simultaneous connection is supported only when GOT network interactive function is used.

*2 Regarding the VNC client software that has been operation-verified, please refer to the technical bulletin No.GOT-A-0234. >>

*3 The screen is created using GT Works3 (GT Designer3). Screens designed for GOT are reusable.

*4 GT SoftGOT3000 license is required.

Technical Bulletin



Remotely monitor the site using web browser

GOT Mobile

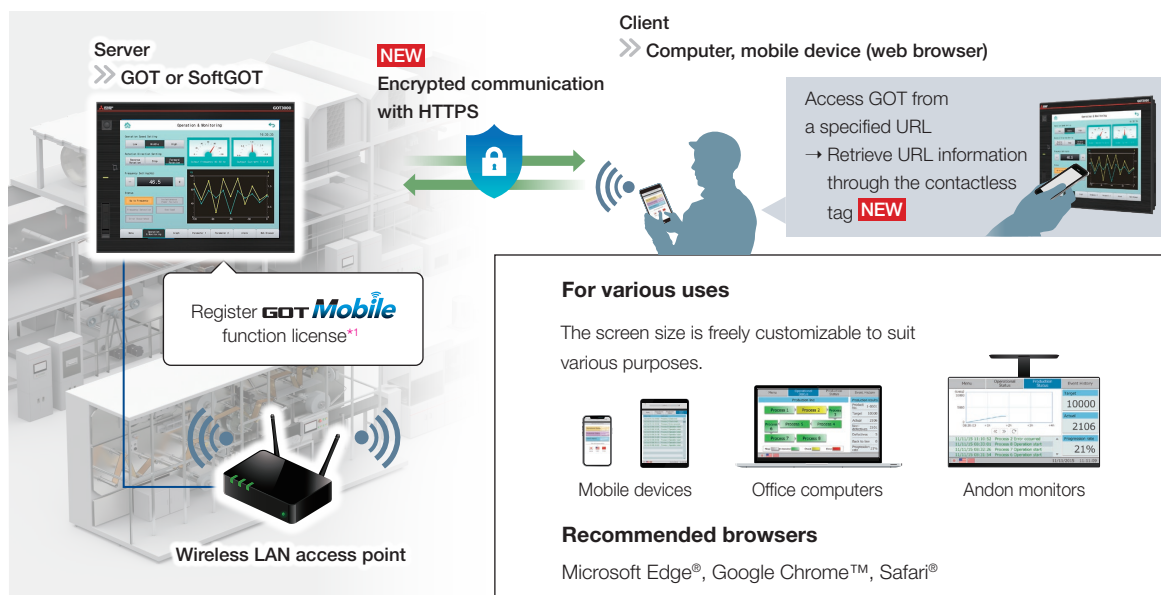
Ver. UP

GOT Mobile Function

License required

- The equipment can be monitored and operated through a web browser on a computer or a mobile device.
- Monitoring the equipment through a web browser eliminates the need for specific software applications or hardware. This allows the system to be built without incurring additional costs.

System configuration



*1 By registering one license on GOT or SoftGOT, GOT can be simultaneously connected by up to 5 clients, and SoftGOT can be simultaneously connected by up to 15 clients.

Notifications by Sound and Vibration



Mobile application Pocket GOT

- This is a mobile app for GOT. When installed on a mobile device, the app sends push notifications with sound or vibration if an error occurs in the monitored GOT. Important information won't be missed.
- With GOT, you can easily build a system that notifies of errors.
- In the mobile app Pocket GOT, you can register up to 20 GOTs to be monitored.

Achieved at no cost by using the free app

The app notifies you of any errors

Three types of push notification

- Vibration
- Sound
- Banner

Can be received even on smartwatches

Tap

GOT Mobile ERROR

[Free]
 Download the mobile app here

GET IT ON Google Play

Download on the App Store

Easy monitoring with the same screen as GOT

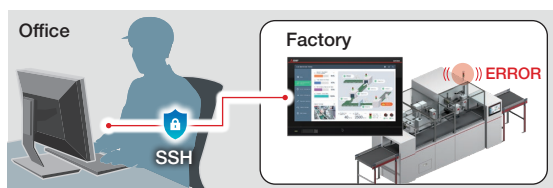
Ver. UP

VNC Server Function

License required

- The GOT screen at a remote site can be displayed and operated as it is on a computer or a mobile device. There is no need to create a separate display screen.
- The GOT screen can be checked directly from the office when a problem occurs, allowing the on-site situation to be quickly understood and promptly addressed.
- **NEW** SSH port forwarding communication is supported, enabling more secure remote access through an encrypted communication route.

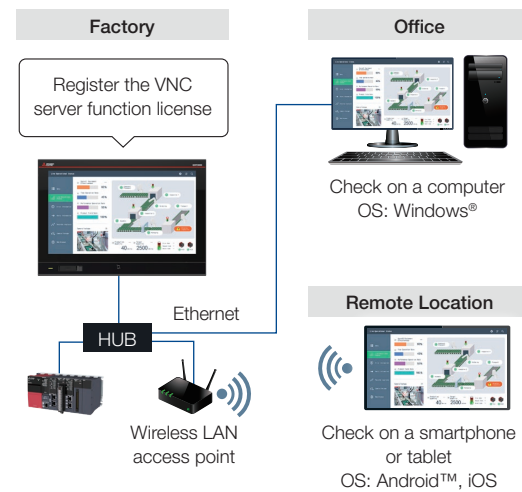
Remote monitoring from the office



Remote monitoring from outside the cleanroom



System configuration

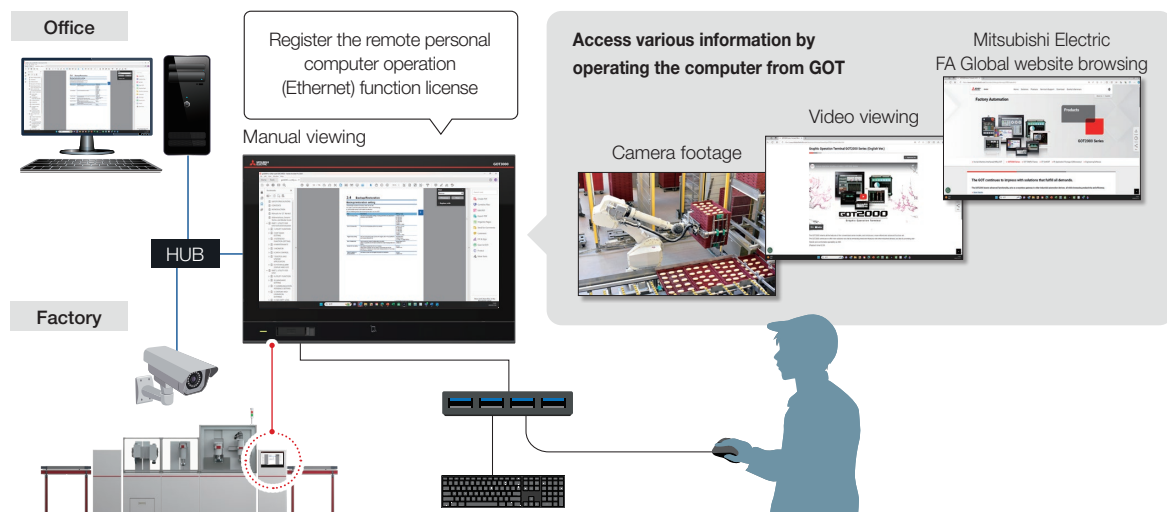


Access computer information from GOT

Remote Personal Computer Operation (Ethernet) Function [Future Support]

License required

- The computer can be remotely operated from GOT, making manuals and drawings in the computer accessible at the production site.
- When a problem occurs, you can refer to the recovery manual on the computer to proceed with recovery work, enabling swift troubleshooting.



Manage both GOT and the production site with your computer

HMI Software

GT SoftGOT3000

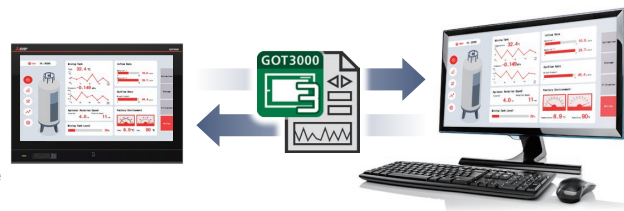
License required*

* A license key (for the USB port) is no longer needed.
The license is now registered electronically.



What can be done with GOT can also be done on your computer

- Production line monitoring is possible on a computer with a screen equivalent to GOT.
- Similar to the GOT screen, the screen is created using GT Works3. Furthermore, project data for GOT can be converted for use on different models.

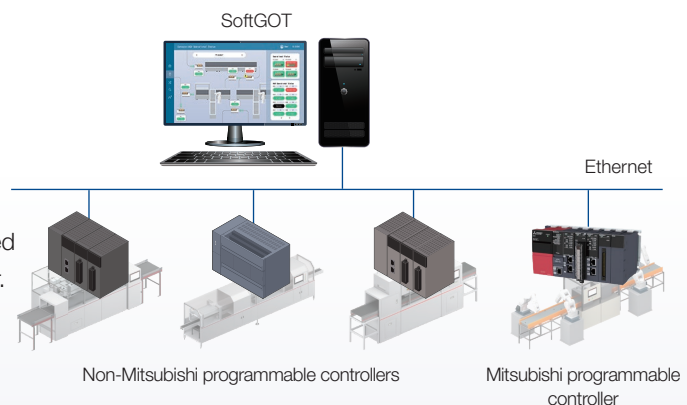


→ For the supported functions, see "Function List" on page 32.

Integrated monitoring of multiple lines

Multi-Channel Function

- Information from multiple lines can be checked and centrally monitored on a single computer.
- One SoftGOT can connect to up to four-channel controllers.

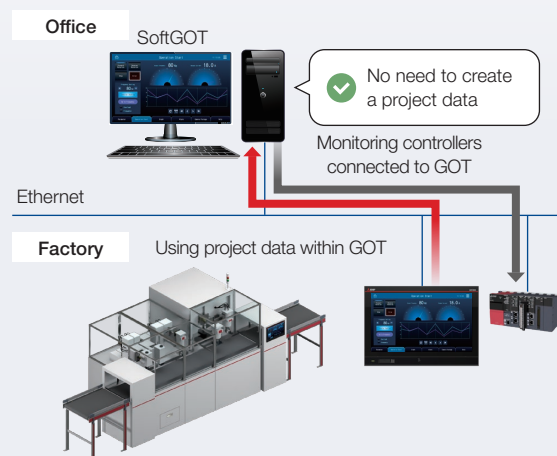


With GOT On-Site

Monitor using the same screen as the on-site GOT

SoftGOT-GOT Link Function [Future Support]

- If there is a GOT on-site, SoftGOT can use the on-site GOT data for remote monitoring.
- The use of the data from the on-site GOT eliminates the need to create screens for SoftGOT.



GOT Solutions

Maintenance Solutions

Reduce man-hours with the various functions that support maintenance work.

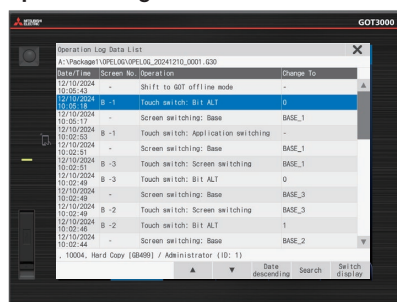


Enhanced traceability enables quick troubleshooting

Operation Log Function

- Check details of what, when, and how operations were performed on GOT.
- When used with the operator authentication function (page 13), the person who performed operations on GOT can be tracked, enabling quick identification and resolution of issues.
- Operation logs can be accessed on a computer, facilitating the analysis of trouble cause tendencies.

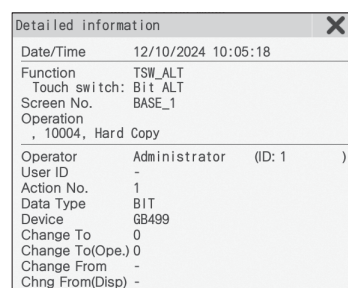
Operation Log List



Touch the row of the operation log you want to check

More details

Detailed information



"When, what, and how" operations were performed can be checked

Information is conveyed more effectively through audio

Sound Output Function

Speech Synthesis Function (GT Designer3)

License required

- Operators can be notified with a voice alert when an event occurs in the equipment. In addition to visual notifications, voice alerts help deliver instructions to operators when action is required.
- Melodies or custom messages will be played depending on the situation.

Messages are available in 6 languages



Speaker with a built-in amplifier



Japanese 部品を交換してください。	English Please replace the part.
Chinese (Traditional) 請更換零件。	Chinese (Simplified) 请更换部件。
Korean 부품을 교환하십시오。	Spanish Reemplace el pieza, por favor.

Convenient access for machine maintenance

FA Transparent Function

- Use GOT as a pass-through connection to access controllers inside the control panel.
- There is no need to open the control panel to connect the computer to the controllers.

✓ Access, start, and adjust each FA device from GOT



Retain important information even without a battery

NEW

Equipped with Non-Volatile RAM

No battery is required to retain data such as logging data and alarm data.

* A battery is required when backing up clock data.

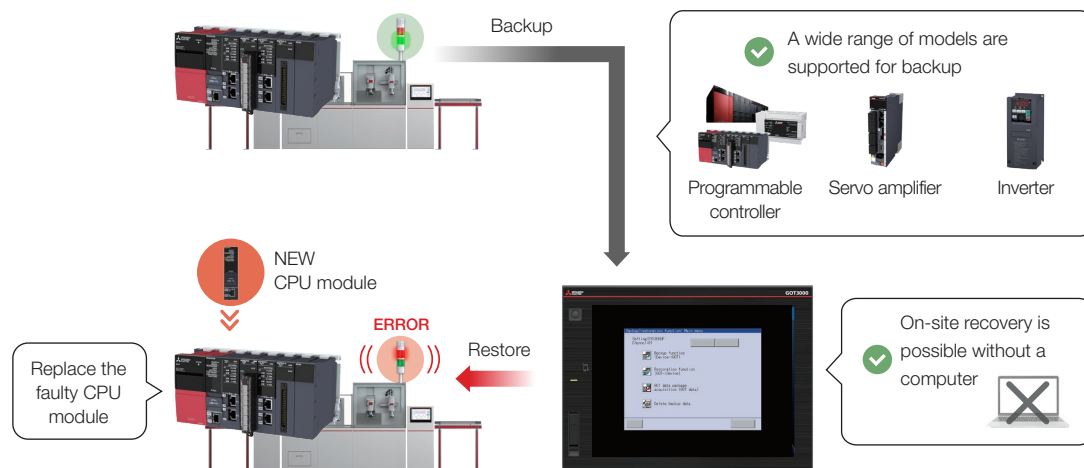


Important data is retained

Quick recovery with on-site GOT, no computer needed

Backup/Restore Function [Future Support]

- GOT can backup/restore program and parameters of connected controllers.
- When replacing equipment due to failure, restore the backed-up data using GOT to quickly return the machine to operating condition.



* Because it is scheduled for future support, the actual screen image may differ.

GOT Solutions

MELSEC

Interactive Solutions

Check the status of the programmable controller without a computer and optimize maintenance work efficiency.

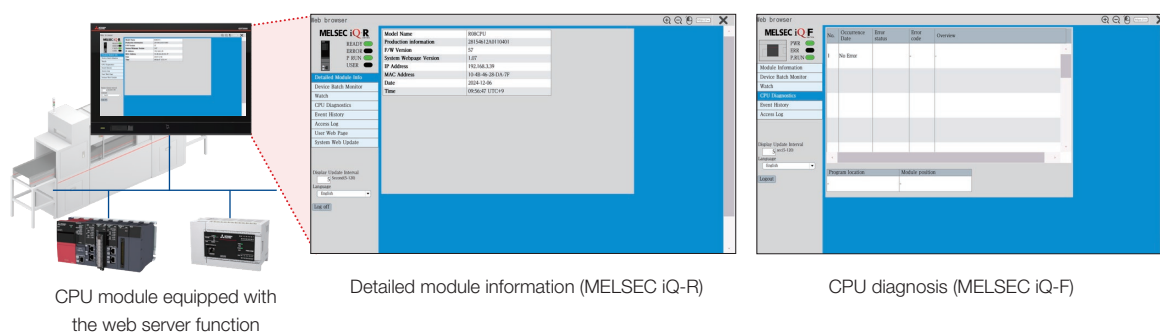


Quickly view programmable controller status

NEW

Web Browser Function

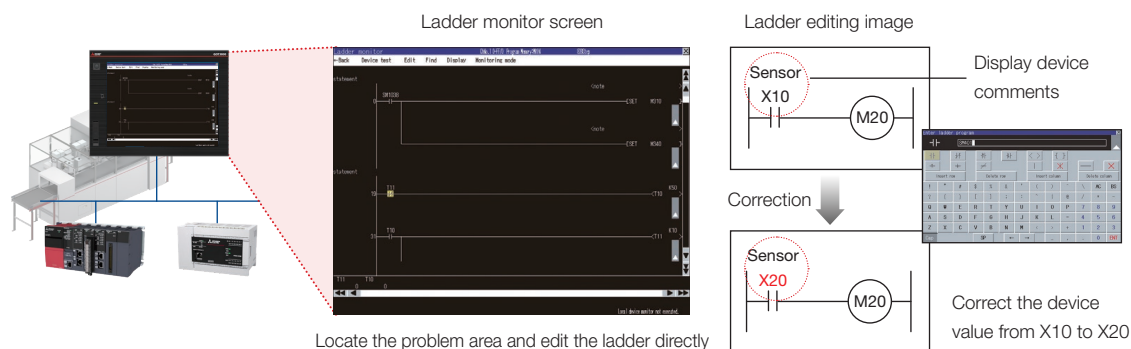
The status of the CPU module can be checked by displaying the web page of the programmable controller's web server function.



Check programmable controller errors in ladder format

Sequence Program Monitor Function [Future Support]

- When an error occurs, identify the cause or equipment's error by checking the sequence program in a ladder diagram format on GOT.
- Modifying the device current values and ladder program editing is also supported.

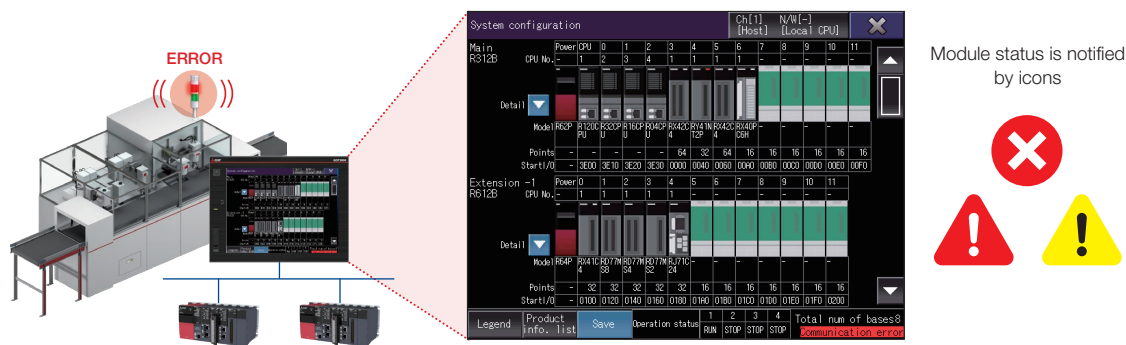


* Because it is scheduled for future support, the actual screen image may differ.

Quickly identify programmable controller module errors

System Launcher Function [Future Support]

The system configuration of the programmable controller connected to GOT can be checked graphically. You can confirm the product information, such as the serial numbers of each unit, without a computer with a dedicated engineering tool installed.

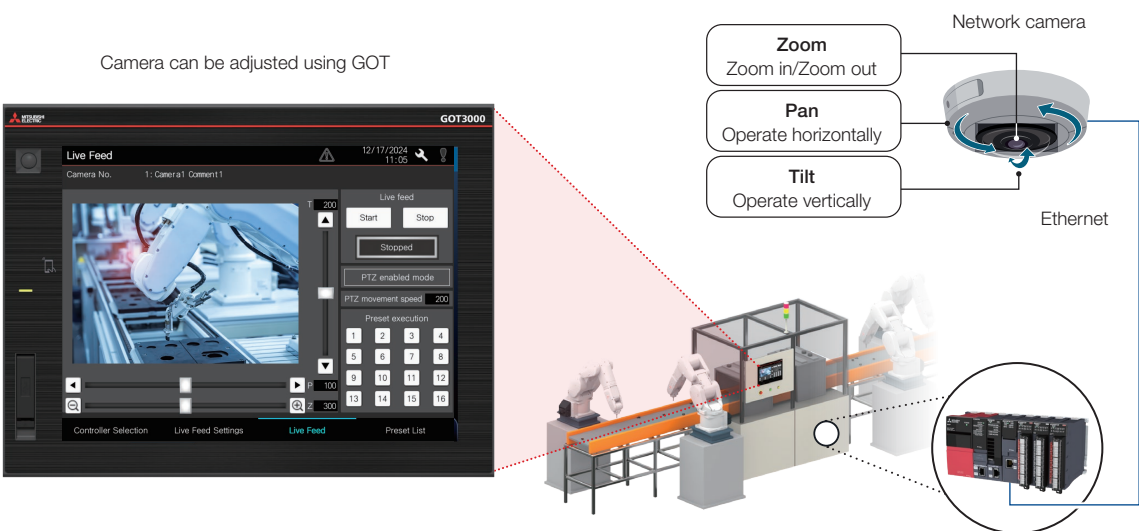


* Because it is scheduled for future support, the actual screen image may differ.

Adjust the system recorder camera without a computer

MELSEC iQ-R Camera Recorder Module Connectivity [Future Support]

- When introducing the system recorder to the equipment, startup operations can be performed quickly by checking the live camera feed on GOT and adjusting the camera position (PTZ control).
- In addition to startup operations, the live camera feed can be checked on the GOT during troubleshooting, which helps identify the cause.



Add-on projects (sample screens) are also available for immediate use.

→ See page 17 for details

GOT Solutions GOT Drive Control Interactive Solution (Servo)

Enhance work efficiency from startup to maintenance by checking the status of the servo system without a computer.



Monitor and configure multiple servo amplifier axes with a single GOT

Previously,
the servo settings were configured, adjusted, diagnosed using

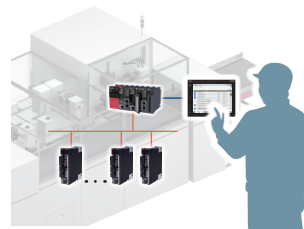
MR Configurator2 **Computer**



- » Computer was required
- » Connecting to the servo amplifier was troublesome

Now, these tasks can be handled using

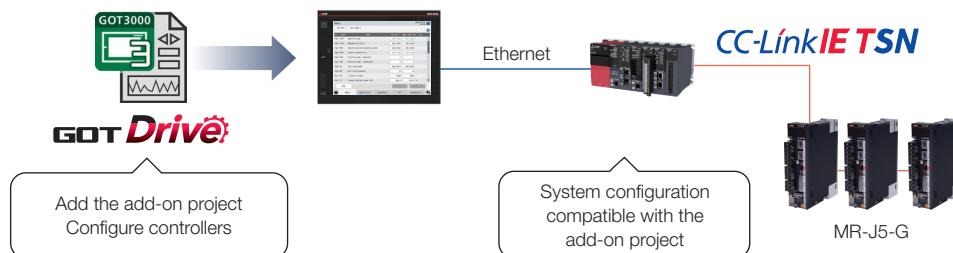
MR Configurator2 **Computer** & **GOT Drive**



- ✓ Configure, adjust, and diagnose multiple axes using a single GOT*1
- ✓ Work can be done immediately on-site

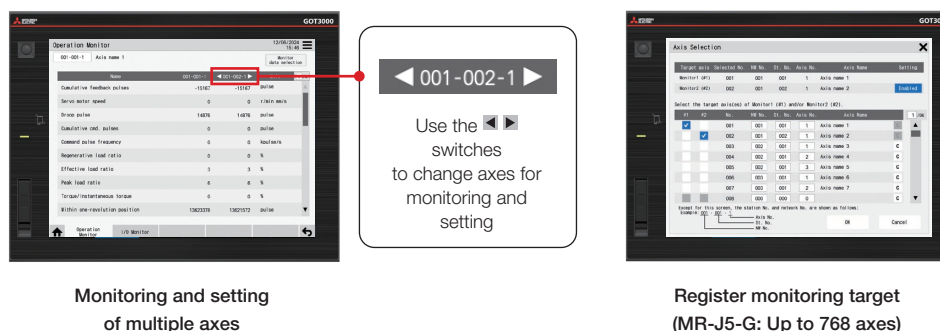
*1 Supports some of the functions of MR Configurator2.

Immediately available with the add-on project (sample screen)



Enhance work efficiency with the easy-to-use screen

Parameters for multiple axes can be monitored and set on a single screen.



Compatible servo amplifiers

Add-on project Add-on project available*1

MELSERVO-1S
 >>MR-J5-G(4)
 >>MR-J5W-G
 >>MR-J5D-G4
 >>MR-J5-B(4)
 >>MR-J5W-B

Add-on project
 Add-on project

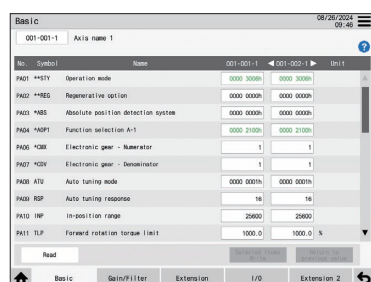
MELSERVO-J4
 >>MR-J4-B(4)
 >>MR-J4W-B
 >>MR-J4-GF(4)

*1 If the model doesn't have an add-on project, users can create their own screens for monitoring and setting.

Startup and adjustment

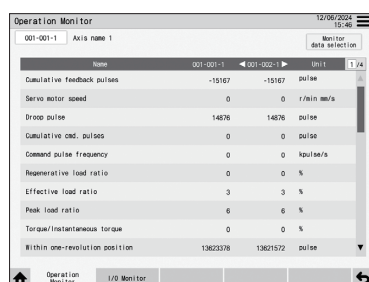
Parameter settings

Display and edit the servo amplifier parameters.



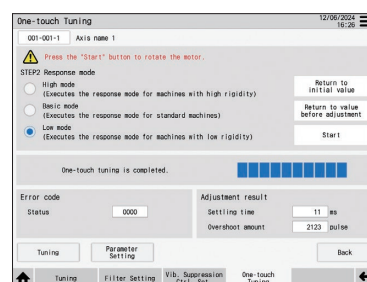
Monitoring

Check the status of the operating servo amplifier.



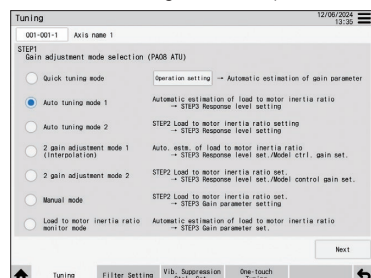
One-touch tuning

Adjust the servo gain according to machine characteristics by simply turning on one-touch tuning function.



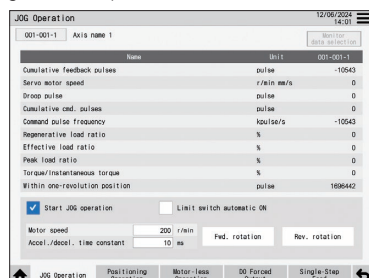
Tuning

In addition to automatic tuning, manually fine-tune the control gain for better performance.



Test operation

Ensure proper machine functioning before it goes to full operation.

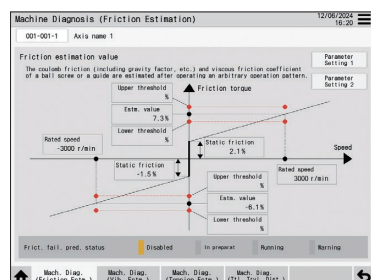


Maintenance

Predictive maintenance

Machine diagnosis

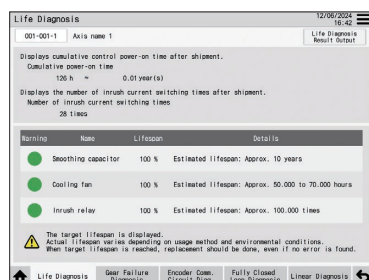
Check the failure predictions diagnosed by the servo amplifier.



Preventive maintenance

Life diagnosis

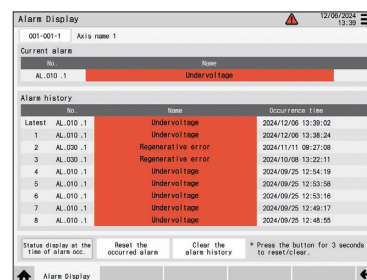
Check the estimated time for servo amplifier repair or replacement. Diagnostic results for multiple axes can be batch output for later review.



Corrective maintenance

Alarm display

Examine the active alarms of the servo amplifier. The alarm history can be also reviewed.



All the screens above are the sample screens for MR-J5-G and MR-J5W-G. As updates are made regularly, the screens may differ from those in this catalog, and some function screens are not presented here.

For the latest add-on projects, please contact your local sales office.

GOT Solutions GOT Drive Control Interactive Solution (Inverter)

Boost work efficiency from startup to maintenance by checking the inverter's status without a computer.



Monitor and configure multiple inverters with a single GOT

Previously, the inverter settings were configured using the operation panel (on the inverter)

FR Configurator2 **Computer**



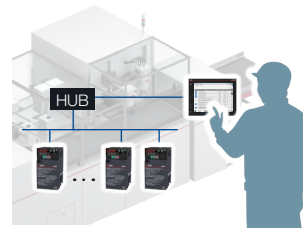
- » Each unit had to be configured individually
- » Connecting to the inverter was troublesome



Now, these tasks can be handled using the operation panel (on the inverter)

FR Configurator2 **Computer**

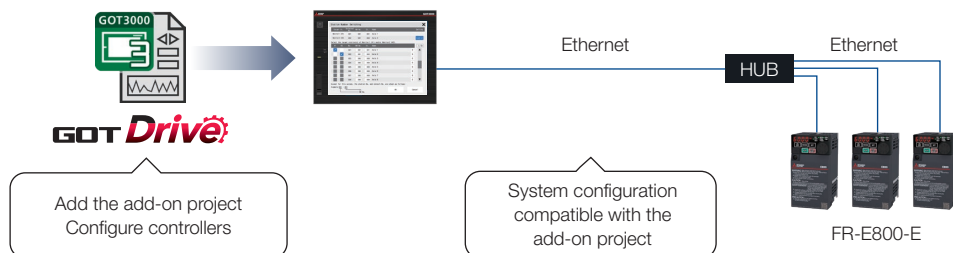
& **GOT Drive**



- ✓ Configure, adjust, and diagnose multiple units using a single GOT^{*1}
- ✓ Work can be done immediately on-site

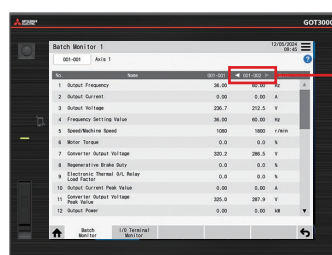
^{*1} Supports some of the functions of FR Configurator2.

Immediately available with the add-on project (sample screen)

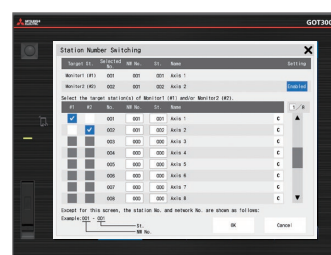
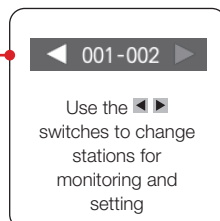


Improve work efficiency with the easy-to-use screen

Parameters for multiple units can be monitored and set on a single screen.



Monitoring and setting
of multiple inverters



Register monitoring target
(FR-E800-E: Up to 64 units)

Compatible inverters

Add-on project Add-on projects available*1

»FR-E800-E

Add-on project

»FR-A800-E

»FR-A800-E Plus

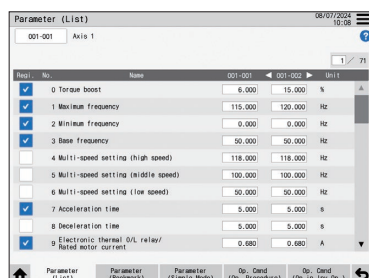
»FR-F800-E

*1 If the model doesn't have an add-on project, users can create their own screens for monitoring and setting.

Startup and adjustment

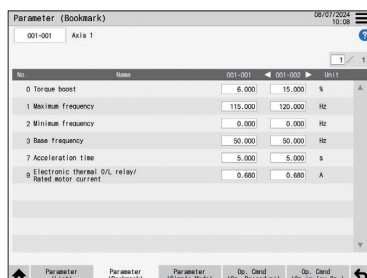
Parameter settings

Display and edit the inverter parameters.



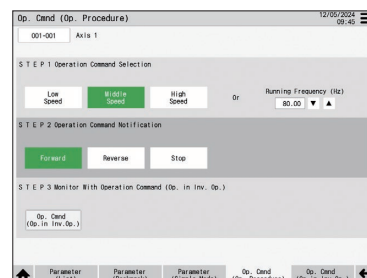
Parameter settings (Bookmark)

Display and edit only the bookmarked parameters.



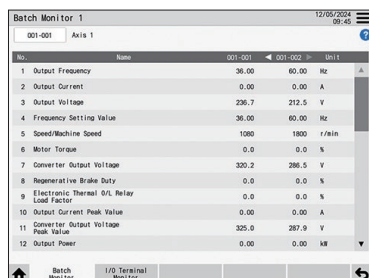
Operation command

Operate the inverter by executing drive commands.



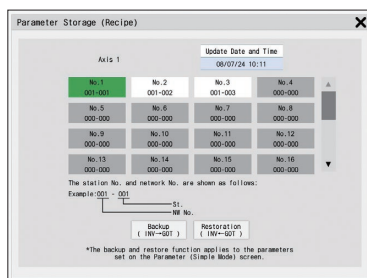
Batch monitoring

Monitor inverter information collectively.



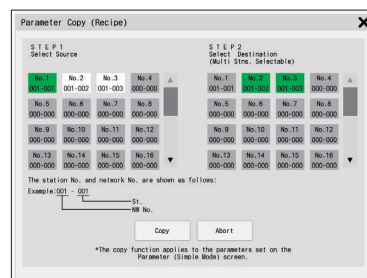
Parameter saving

Save parameter information and restore it when necessary.



Parameter copy

Copy the backed up parameter information to another inverter.

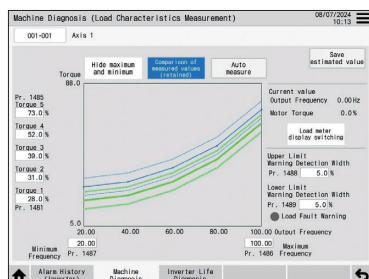


Maintenance

Predictive maintenance

Machine diagnosis (Load Characteristics Measurement)

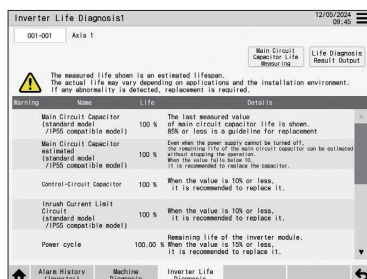
Verify the load conditions and fault detection diagnosed by the inverter.



Preventive maintenance

Life diagnosis

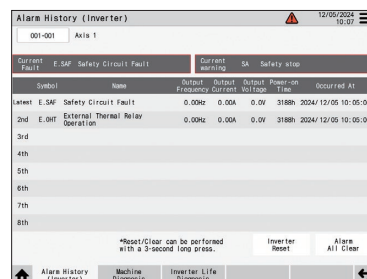
Check the estimated time for inverter repair or replacement. Diagnostic results for multiple units can be batch output for later review.



Corrective maintenance

Alarm display

Examine the active alarm of the inverter. Reviewing the alarm history is also possible.



All the screens above are the sample screens for FR-E800-E. As updates are made regularly, the screens may differ from those in this catalog, and some function screens are not presented here.

For the latest add-on projects, please contact your local sales office.

Function List

●: Supported ▲: Supported only on certain models —: Not supported

Category	Item		○: Required △: Conditionally required		GT37 Wide	GT37	GT SoftGOT3000	GT27
			License	External storage				
Hardware specifications	Screen size	15.6" widescreen	NEW		●	—		—
		12.1" widescreen	NEW		●	—		—
		12.1"			—	●		●
		10.4"			—	●		●
		8.4"			—	●		●
	Resolution	Full HD 1920 x 1080	NEW		●	—	Long side: 640 to 1920 Short side: 480 to 1200	—
		WXGA 1280 x 800			●	—		—
		XGA 1024 x 768			—	●		▲
	Color	16 million colors	NEW		●	●	●	—
	Simultaneous press (2 points)				●	—	—	●
	Human sensor				—	▲ GT3712-X only	—	▲
	Memory	User memory	RAM		768 MB			256 MB (GT2705-V: 80 MB)
			ROM		256 MB			57 MB (GT2705-V: 32 MB)
		Non-volatile RAM		NEW		●	—	—
	Built-in interface	RS-232/422/485			RS-232/422/485 x 1		Computer I/F required	RS-232 x 1, RS-422/485 x 1
		Ethernet	Port 1		1000BASE-T, CC-Link IE TSN (Class A) supported		Computer I/F required	100BASE-TX
			Port 2		1000BASE-T		—	—
		Front USB (device/host)		NEW	USB 3.2 gen1 x 1, USB Type-C		—	Device: USB 2.0 x 1, USB Mini B Host: USB 2.0 x 1, USB Type-A
		Rear USB (host)			USB 3.2 gen1 x 1, USB Type-A		Computer I/F required	USB 2.0 x 1, USB Type-A
		Digital video output		NEW	●		—	—
		SD memory card			●		Computer virtual drive	●
		Contactless tag		NEW	●		—	—
		Extension I/F			●		—	●
Screen design	Figure/Object function	Figure			●	●	●	●
		Logo text			●	●	●	●
		UD font		NEW	●	●	●	—
		Touch switch			●	●	●	●
		Lamp			●	●	●	●
		Numerical display, Numerical input			●	●	●	●
		Text display, Text input			●	●	●	●
		Date display, Time display			●	●	●	●
		Comment display			●	●	●	●
		Parts display			●	●	●	●
		Frame animation		NEW	●	●	●	—
		Historical data list display			●	●	●	●
		Alarm display	Alarm display (user)		●	●	●	●
			Alarm display (system)		●	●	●	●
			Simple alarm display		●	●	●	●
			System alarm display		●	●	●	●
		Recipe display (record list)			●	●	●	●
		Graph			●	●	●	●
		Historical trend graph			●	●	●	●
		Graphical meter			●	●	●	●
		Meter			●	●	●	●
		Slider			●	●	●	●
		Document display	Document converter output file		○	●	●	●
			PDF file		○	[Future Support]	[Future Support]	●
		Script part				●	●	●
Functions running in the background	Logging			△	●	●	●	●
	Recipe			△	●	●	●	●
	Device data transfer				●	●	●	●
	Trigger action				●	●	●	●
	Time action			△	●	●	●	●
	Hard copy	File output (BMP, JPEG)			○	●	●	●
		Project/Screen script				●	●	●
	Object script					●	●	●

●: Supported ▲: Supported only on certain models —: Not supported

Category	Item	○: Required △: Conditionally required		GT37 Wide	GT37	GT SoftGOT3000	GT27
		License	External storage				
Screen design	Barcode function			●		●	●
	RFID function			●		●	●
	GOT Mobile function	○	△	●		●	●
	Web browser function NEW			●		—	—
	VNC server function	○		●		—	●
	Remote personal computer operation (Ethernet) function	○		[Future Support]		—	●
	Digital image input function	WEB camera (USB connection) NEW		●		—	—
		Computer		●		—	▲ Extension unit required
		Network camera (Ethernet connection) NEW	○	[Future Support]		—	—
	Digital image recording and playback function NEW	WEB camera (USB connection)	○	[Future Support]		—	—
		Network camera (Ethernet connection)	○	[Future Support]		—	—
	External I/O function			[Future Support] Extension unit required		—	● Extension unit required
	Operation panel function			[Future Support] Extension unit required	[Future Support]		● Extension unit required
	Image output function			●		—	▲ Extension unit required
	Sound output function			●	●		● Extension unit required
	VPN connection function NEW	○		●		—	—
	Contactless tag function NEW			●		—	—
	OPC UA server function NEW			●	[Future Support]		—
	OPC UA client function NEW			[Future Support]	[Future Support]		—
	Server function			[Future Support]	[Future Support]		●
	Client function			[Future Support]	—		●
	Mail send function			[Future Support]	[Future Support]		●
	FTP server function		△	[Future Support]	—		●
	File transfer (FTP client) function		○	[Future Support]	—		●
	USB mouse, USB keyboard function			●		●	●
GOT functions	Base screen			●		●	●
	Window screen			●		●	●
	Mobile screen			●		●	●
	Language switching			●		●	●
	System information			●		●	●
	Operator authentication		△	●		●	●
	Information protection function NEW			●		●	—
	Encrypted communication function NEW			●		●	—
	Operation log		○	●		●	●
	Startup logo			● Fade-in/Fade-out function expansion available			●
	Kana-Kanji/Pinyin conversion			[Future Support]	[Future Support]		●
	FA transparent			●		—	●
	SoftGOT-GOT link			[Future Support]	[Future Support]		●
	Backup/Restore function		○	[Future Support]	[Future Support]		●
	Multi-channel function			4 channels		4 channels	4 channels
	Station No. switching			●		●	●
	GOT network interaction function			[Future Support]	[Future Support]		●
	Screen gesture function			●	—	—	●
	Object gesture function			●	● Some functions are unavailable	—	●
	IP filter function			●		—	●
Maintenance function	Vertical display			●		—	●
	Sequence program monitor (Q-R ladder)		○	[Future Support]	—		●
	Sequence program monitor (Q-F ladder)		○	[Future Support]	—		●
	Sequence program monitor (Q/L ladder)		○	[Future Support]	—		●
	CC-Link IE TSN/CC-Link IE Field network diagnosis			[Future Support]	—		●
	Intelligent unit monitor			[Future Support]	—		●
	R motion monitor			[Future Support]	—		●
	Log viewer		△	[Future Support]	—		●
	iQSS utility		○	[Future Support]	—		●
	System launcher			[Future Support]	[Future Support]		●
	GOT offline monitor		△	[Future Support]	[Future Support]		●

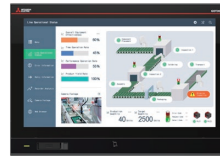


For details on each function, compatible controllers, and connection configurations, please refer to the GOT3000 Series manual.

—: Not supported

GT37 Wide

Wide



Wide



Category	Item		GT3715-FHCBD				GT3712-WXCBD	
Performance specifications	Display section*1	Display device	TFT color LCD					
		Screen size	15.6" widescreen				12.1" widescreen	
		Resolution	Full HD: 1920 x 1080				WXGA: 1280 x 800	
		Screen size (W x H)	344.2 x 193.6 mm 13.55 x 7.62 in.				261.1 x 163.2 mm 10.28 x 6.43 in.	
		Display color	16 million colors					
		Brightness adjustment	32 levels					
		Backlight	LED (not replaceable)					
		Backlight life	50,000 hours or more					
	Touch panel	Type	Projected capacitive*2					
		Simultaneous press	Up to two points					
		Life	—					
	Panel color		Black					
	Human sensor		—					
	Memory capacity (user memory)		RAM: 2 GB (768 MB)					
			ROM: 512 MB (256 MB)					
	Battery	GT11-50BAT lithium battery (sold separately)						
		Backup target	Clock data					
	Built-in interface	RS-232/422/485	1 channel, D-sub 9-pin (socket), 115200, 57600, 38400, 19200, 9600, 4800 bps Select either one channel from RS-232 or RS-422/485					
		Ethernet	2 channels, RJ45 (modular jack), 1000BASE-T, 100BASE-TX, 10BASE-T					
		USB (device/host)	1 channel, USB Type-C, USB 3.2 gen 1					
		USB (host)	1 channel, USB Type-A, USB 3.2 gen 1					
		Digital video output	1 channel, HDMI connector type A					
		SD memory card	1 channel					
		Contactless tag	1 channel					
		Extension I/F	For communication unit connection					
	Buzzer sound		Single tone (pitch and duration adjustable)					
	Power LED		Yellow-green					
	Protective structure		Front: IP66F, IP67F, NEMA Type 4X Enclosure interior: IP2X					
	Safety standards		CE, UL, cUL, KC					
	External dimensions (W x H x D)		397 x 276 x 63 mm 15.63 x 10.87 x 2.48 in.				316 x 244 x 63 mm 12.44 x 9.61 x 2.48 in.	
	Panel cutting dimensions (W x H)		383.5 x 260 mm 15.1 x 10.24 in.				302 x 228 mm 11.89 x 8.98 in.	
	Weight (excl. the installation fittings)		2.7 kg 6.0 lb				2.1 kg 4.6 lb	
General specifications	Ambient operating temperature		0°C to 55°C					
	Ambient storage temperature		-20°C to 60°C					
	Ambient operating/storage humidity		10% RH to 90% RH, non-condensing					
	Vibration resistance		Compliant with JIS B 3502 and IEC 61131-2	Frequency	Acceleration	Amplitude	Sweep count	
				5 Hz to 8.4 Hz	—	3.5 mm	X, Y, or Z 10 times in each direction	
				8.4 Hz to 150 Hz	10 m/s ²	—		
Shock resistance		Compliant with JIS B 3502 and IEC 61131-2 150 m/s ² (15 G), 3 times in X, Y, or Z directions						
Power supply specifications	Power supply voltage		24 V DC (+25%, -20%)					
	Power supply frequency		—					
	Power consumption	Under the maximum load	42 W or less				37 W or less	
		Main unit (ref. value)	20 W				15 W	
Compatible software package			GT Works3 version 1.400S or later					

^{*1} As a characteristic of liquid crystal display panels, bright dots (always lit) and dark dots (never lit) may appear on the panel. Since liquid crystal display panels comprise a great number of display elements, the appearance of bright and dark dots cannot be reduced to zero. Individual differences in liquid crystal display panels may cause differences in color, uneven brightness and flickering. Note that these phenomena are characteristics of liquid crystal display panels and it does not mean the products are defective or damaged.

^{*2} If conductive materials such as water or oil adhere to the display, GOT may malfunction. Remove any conductive materials before use.

—: Not supported

GT37

SoftGOT



GT3712-XRBA	GT3712-XRBD	GT3710-XRBA	GT3710-XRBD	GT3708-XRBA	GT3708-XRBD	GT SoftGOT3000
TFT color LCD						—
12.1"	10.4"		8.4"			—
XGA: 1024 x 768						Long side: 640 to 1920 Short side: 480 to 1200
246.0 x 184.5 mm 9.69 x 7.26 in.	211.2 x 158.4 mm 8.31 x 6.24 in.		170.9 x 128.2 mm 6.73 x 5.05 in.			—
16 million colors						16 million colors
32 levels						—
LED (not replaceable)						—
50,000 hours or more						—
Analog resistive						—
—						—
1 million touches or more						—
Black						—
Pyroelectric type	—		—			—
RAM: 2 GB (768 MB)						RAM: (768 MB)
ROM: 512 MB (256 MB)						ROM: (256 MB)
GT11-50BAT lithium battery (sold separately)						—
Clock data						
1 channel, D-sub 9-pin (socket), 115200, 57600, 38400, 19200, 9600, 4800 bps Select either one channel from RS-232 or RS-422/485						Computer I/F required
2 channels, RJ45 (modular jack), 1000BASE-T, 100BASE-TX, 10BASE-T						Computer I/F required
1 channel, USB Type-C, USB 3.2 gen 1						—
1 channel, USB Type-A, USB 3.2 gen 1						Computer I/F required
1 channel, HDMI connector type A						—
1 channel						Computer virtual drive
1 channel						—
For communication unit connection						—
Single tone (pitch and duration adjustable)						Single tone (duration adjustable) Built-in computer speaker or equivalent required
Yellow-green						—
Front: IP66F, IP67F, NEMA Type 4X Enclosure interior: IP2X						—
CE, UL, cUL, KC						—
316 x 240 x 61 mm 12.44 x 9.45 x 2.40 in.	303 x 212 x 61 mm 11.93 x 8.35 x 2.40 in.		241 x 188 x 61 mm 9.49 x 7.40 x 2.40 in.			—
302 x 228 mm 11.89 x 8.98 in.	289 x 200 mm 11.38 x 7.87 in.		227 x 176 mm 8.94 x 6.93 in.			—
2.0 kg 4.4 lb	1.8 kg 4.0 lb		1.5 kg 3.3 lb			—
0°C to 55°C						—
-20°C to 60°C						—
10% RH to 90% RH, non-condensing						—
Compliant with JIS B 3502 and IEC 61131-2	Frequency	Acceleration	Amplitude	Sweep count		—
	5 Hz to 8.4 Hz	—	3.5 mm	X, Y, or Z 10 times in each direction		
	8.4 Hz to 150 Hz	10 m/s²	—			
Compliant with JIS B 3502 and IEC 61131-2 150 m/s² (15 G), 3 times each in X, Y, and Z directions						—
100 V AC to 240 V AC (+10%, -15%)	24 V DC (+25%, -20%)	100 V AC to 240 V AC (+10%, -15%)	24 V DC (+25%, -20%)	100 V AC to 240 V AC (+10%, -15%)	24 V DC (+25%, -20%)	—
50 Hz/60 Hz (±5%)	—	50 Hz/60 Hz (±5%)	—	50 Hz/60 Hz (±5%)	—	—
45 W or less	39 W or less	39 W or less	33 W or less	38 W or less	33 W or less	—
19 W	17 W	15 W	12 W	15 W	12 W	—
GT Works3 version 1.400S or later						GT Works3 version 1.400S or later



Frequently Asked Questions



For details, please refer to the following manual:
GOT3000 Series User's Manual (Hardware)

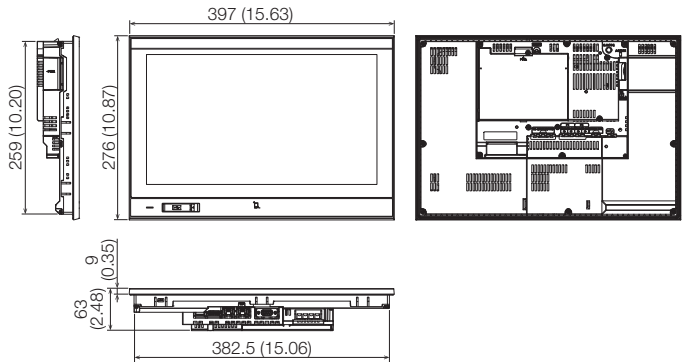
Dimensions

GT37 Wide

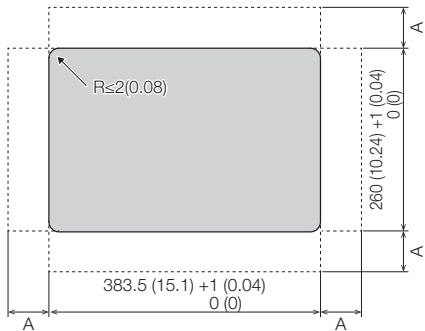
Unit: mm (in.)

GT3715-FHCBD

External dimensions



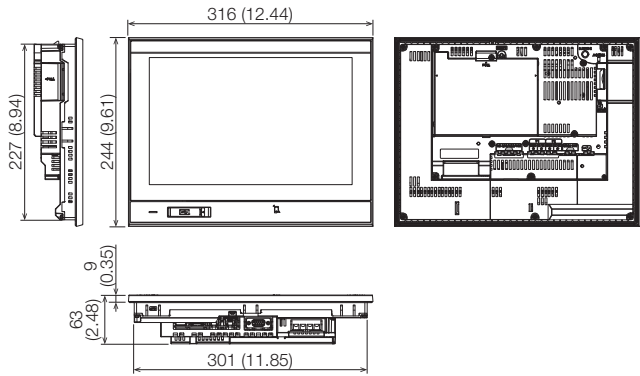
Panel cutting dimensions



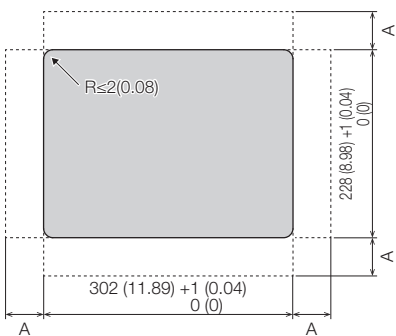
A=15 (0.59) or more
Panel thickness: 1.6 to 4 (0.06 to 0.16)

GT3712-WXCB

External dimensions



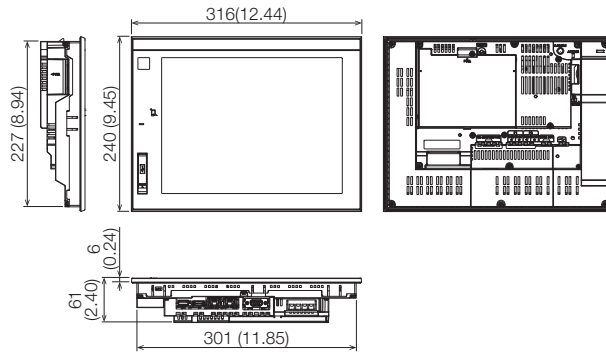
Panel cutting dimensions



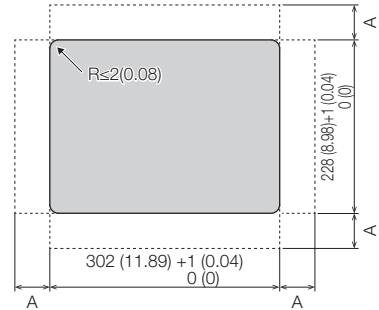
A=15 (0.59) or more
Panel thickness: 1.6 to 4 (0.06 to 0.16)

GT3712-X

External dimensions



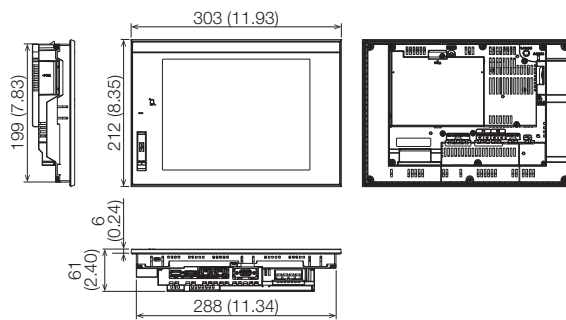
Panel cutting dimensions



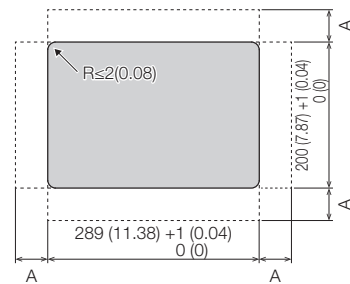
A=15 (0.59) or more
Panel thickness: 1.6 to 4 (0.06 to 0.16)

GT3710-X

External dimensions



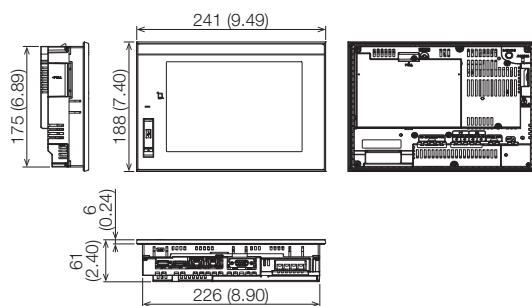
Panel cutting dimensions



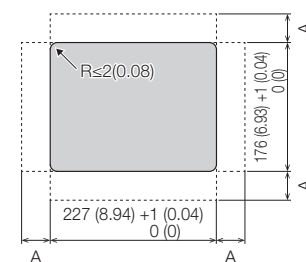
A=15 (0.59) or more
Panel thickness: 1.6 to 4 (0.06 to 0.16)

GT3708-X

External dimensions



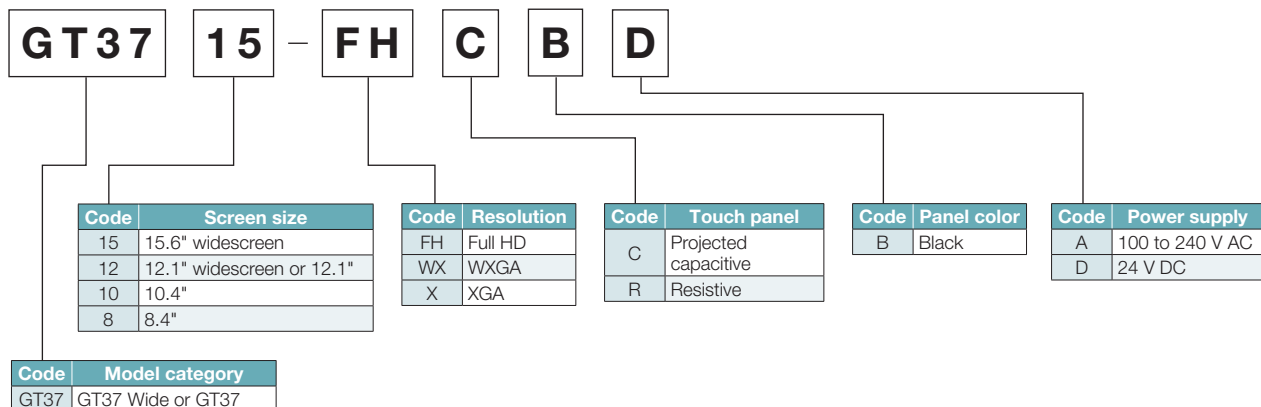
Panel cutting dimensions








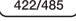


A=15 (0.59) or more
Panel thickness: 1.6 to 4 (0.06 to 0.16)

Product List

GOT Model Name



GOT Base Units

G01 Base Units							
Category	Model	Specifications					Built-in I/F
		Screen size resolution	Touch panel	Display color	Panel color	Power supply	
GT37 Wide	GT3715-FHCB	15.6" widescreen Full HD	Projected capacitive	16 million colors	Black	DC	<div><div> Ethernet</div><div> RS-232/422/485</div><div> Digital video output</div><div> Extension I/F</div><div> TAG</div><div> USB Type-C</div><div> USB Type-A</div><div> SD</div></div>
	GT3712-WXCBD	12.1" widescreen WXGA				DC	
GT37	GT3712-XRBA	12.1" XGA	Resistive			AC	
	GT3712-XRBD	XGA				DC	
	GT3710-XRBA	10.4" XGA				AC	
	GT3710-XRBD	XGA				DC	
	GT3708-XRBA	8.4" XGA				AC	
	GT3708-XRBD	XGA				DC	

Extension Units

●: Supported —: Not supported

Product		Model	Specifications	Compatible model GT37
Extension interface conversion unit		GT37-IF2000	Unit for using GOT2000 series and GOT1000 series communication units with the GOT3000 series.	●
Communication units	Serial communication unit	GT15-RS2-9P	RS-232 serial communication unit (D-sub 9-pin plug)	●*1
		GT15-RS4-9S	RS-422/485 serial communication unit (D-sub 9-pin socket)	●*1
		GT15-RS4-TE	RS-422/485 serial communication unit (terminal block)	●*1
		GT25-J71GN13-T2	Local station (device station) unit	●*1
	CC-Link IE TSN communication unit	GT15-J71GF13-T2	Intelligent device station unit	●*1
	CC-Link IE Field Network communication unit			●*1

*1 A separate extension interface conversion unit is required when using with GT37.

Software

Product	Model	Language	License type	Delivery type
HMI/GOT Screen Design Software MELSOFT GT Works3	SW1DND-GTWK3-EC	English	Site license product*1	DVD
FA Integrated Engineering Software MELSOFT iQ Works*2	SW2DND-IQWK-EC	English	Site license product*1	DVD

*1 Available for use only by individuals from the same corporation that purchased the product, its business offices (including overseas offices), public vocational training facilities, or other educational institutions, with no limitations on the number of computers or users.

*2 iQ Works is an integrated software suite that includes various engineering software for Mitsubishi Electric FA devices, centered around the system management software MELSOFT Navigator. GT Works3 is one of the software included in iQ Works.



Learn more about
MELSOFT iQ Works here

License for GOT3000

●: Supported —: Not supported

Product		Model	Number of licenses for sale	Delivery type	Compatible model GT37
Add-on function	GOT Mobile function license for GOT3000 ^{*1}	GT30-WEBSKEYA1-1	1	License certificate	●
		GT30-WEBSKEYA1-5	5	License certificate	●
		GT30-WEBSKEYA1N-1	1	Digital distribution	●
	VNC server function license ^{*1}	GT30-VNCSKEYA1-1	1	License certificate	●
		GT30-VNCSKEYA1-5	5	License certificate	●
		GT30-VNCSKEYA1N-1	1	Digital distribution	●
	VPN connection function license ^{*1}	GT30-VPNKEYA1-1	1	License certificate	●
		GT30-VPNKEYA1-5	5	License certificate	●
		GT30-VPNKEYA1N-1	1	Digital distribution	●
	GT Works text to speech license ^{*2}	SW1DND-GTVO-M	1	License certificate	●

^{*1} Each GOT requires one license.

^{*2} Each computer requires one license to edit sound files.

License for GT SoftGOT3000

Product		Model	Number of licenses for sale	Delivery type
License for GT SoftGOT3000 ^{*1}		GT3S-SGTKEYA1-1	1	License certificate
		GT3S-SGTKEYA1-10	10	License certificate
		GT3S-SGTKEYA1-20	20	License certificate
		GT3S-SGTKEYA1N-1	1	Digital distribution
		GT3S-WEBSKEYA1-1	1	License certificate
Add-on function	GOT Mobile function license for GT SoftGOT3000 ^{*1}	GT3S-WEBSKEYA1-5	5	License certificate
		GT3S-WEBSKEYA1N-1	1	Digital distribution

^{*1} Each OS requires one license.

Mobile Applications (for GOT3000, GT SoftGOT3000)

Product	Description
Pocket GOT	Download from the App Store or Google Play™. * The app is compatible with iPhone, iPad, or Android™ devices. For information about the operating environment, please check the App Store or Google Play™.

Options

●: Supported —: Not supported

Product	Model	Description		Compatible model GT37
Protective sheet	GT37-15WPSGC	For 15.6" widescreen, projected capacitive touch screen	Antiglare Type Transparent A set of 2 sheets	●
	GT37-12WPSGC	For 12.1" widescreen, projected capacitive touch screen		●
	GT37-15WPSCC	For 15.6" widescreen, projected capacitive touch screen	Clear Type Transparent A set of 2 sheets	●
	GT37-12WPSCC	For 12.1" widescreen, projected capacitive touch screen		●
Oil-resistant cover	GT20-12PCO	For 12.1"		●
	GT20-10PCO	For 10.4"		●
	GT20-08PCO	For 8.4"		●
Stand	GT15-80STAND	For 12.1" widescreen and 12.1"		●
	GT15-70STAND	For 10.4" and 8.4"		●
SD memory card	NZ1MEM-2GBSD	SD memory card for GOT, 2 GB		●
	NZ1MEM-4GBSD	SDHC memory card for GOT, 4 GB		●
	NZ1MEM-8GBSD	SDHC memory card for GOT, 8 GB		●
	NZ1MEM-16GBSD	SDHC memory card for GOT, 16 GB		●
Battery	GT11-50BAT	For clock data backup ^{*1}		●

^{*1} The clock data is used for functions such as logging. To back up the clock data, please purchase a battery.

Product List

Cables

●: Supported —: Not supported

Product		Model	Cable length (m)	Recommended Product	Specifications	Compatible model
						GT37
USB Cable	Panel-mounted USB port extension	GT14-C10EXUSB-4S	1	*1	For routing the USB interface (host) of the GOT rear face to the front side of the control panel	●
RS-485 terminal block conversion unit		FA-LTBGT2R4CBL05	0.5		RS-485 terminal block conversion unit with cable between RS-422/485 (connector) and RS-485 terminal block conversion unit	●
		FA-LTBGT2R4CBL10	1			●
		FA-LTBGT2R4CBL20	2			●
RS-422-232 connector conversion cable		GT35-C02HR2-9P	0.2	*2	Connector conversion cable for connecting existing RS-232 cable [D-sub 9 pin ↔ D-sub 9 pin]	●

*1 The products are developed by Mitsubishi Electric Engineering Company Limited and sold through your local sales office.

*2 The products are developed by Mitsubishi Electric System & Service Company Limited and sold through your local sales office.

Related Manuals

Title	Number	Delivery type
GT Designer3 (GOT3000) Screen Design Manual	SH-082590ENG	PDF, e-Manual
GOT3000 Series User's Manual (Hardware)	SH-082591ENG	PDF, e-Manual
GOT3000 Series User's Manual (Utility & Maintenance Functions)	SH-082592ENG	PDF, e-Manual
GOT3000 Series User's Manual (Connection)	SH-082593ENG	PDF, e-Manual
GT SoftGOT3000 User's Manual	SH-082594ENG	PDF, e-Manual

Discover the latest information in Factory Automation

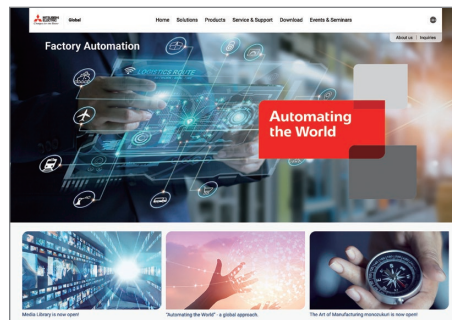
Factory Automation Global website

Mitsubishi Electric Factory Automation provides a mix of services to support its customers worldwide. A consolidated global website is the main portal, offering a selection of support tools and a window to its local Mitsubishi Electric sales and support network.

■ From here you can find:

- Overview of available factory automation products
- Library of downloadable literature
- Support tools such as online e-learning courses, terminology dictionary, etc.
- Global sales and service network portal
- Latest news related to Mitsubishi Electric factory automation

Mitsubishi Electric Factory Automation Global website:
www.MitsubishiElectric.com/fa



Mitsubishi Electric FA e-Learning

An extensive library of e-learning courses covering the factory automation product range.

Courses from beginner to advanced levels of difficulty are available anytime anywhere.



■ Beginner level

Designed for newcomers to Mitsubishi Electric Factory Automation products gaining a background of the fundamentals and an overview of various products related to the course.

■ Basic to Advanced levels

Various different features are explained along with setup, programming, and network configuration.

Innovative next-generation e-Manual

A next-generation digital manual that consolidates factory automation products manuals into an easy-to-use package with various useful features.

■ e-Manual Viewer

Multiple manuals can be cross-searched at once. Multiple users can share the latest manuals and knowhow with document sharing function.



■ e-Manual Create

Software for converting word files and chm files to e-Manual documents. User's customized machine manuals can be converted to e-Manual documents, allowing consolidated management of user's maintenance information and Mitsubishi Electric product information.

Find information on products, factory automation, e-F@ctory solutions and other topics

Follow us on Social Media

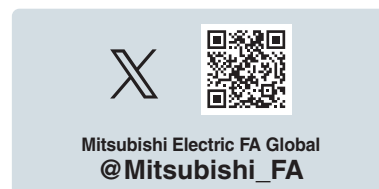
■ YouTube



■ LinkedIn



■ X



Trademarks and registered trademarks

Android, Google Chrome, Google Play, and the Google Play logo are trademarks or registered trademarks of Google Inc.

App Store is a service mark of Apple Inc.

Apple and the Apple logo are trademarks of Apple Inc., registered in the U.S. and other countries.

GENESIS64 and their respective modules are trademarks of ICONICS, Inc.

iOS is the name of the operating system by Apple Inc.

IOS is a trademark or registered trademark of Cisco in the U.S. and other countries and is used under license.

JavaScript is a registered trademark of Oracle Corporation and its subsidiaries and affiliates in the U.S. and other countries.

MELSEC, MELSOFT, GOT, CC-Link, and CC-Link IE are trademarks or registered trademarks of Mitsubishi Electric Corporation in Japan and other countries.

Microsoft and Windows are trademarks of companies in Microsoft group.

OPC UA and the OPC CERTIFIED logo are registered trademarks of OPC Foundation.

QR Code is a registered trademark of DENSO WAVE INCORPORATED.

Safari, iPhone, and iPad are trademarks of Apple Inc., registered in the U.S. and other countries. The iPhone trademark is used under license from AIPHONE Co., Ltd.

VNC is a registered trademark of RealVNC Ltd. in the U.S. and other countries.

Other company names and product names in this catalog are either trademarks or registered trademarks of their respective owners.

Trademark symbols (™ and ®) may not be specified in the text.

The actual color may differ slightly from the pictures in this catalog.

The actual display may differ from what are shown on GOT screen images.

Precautions before use

This publication explains the typical features and functions of the products herein and does not provide restrictions or other information related to usage and module combinations. Before using the products, always read the product user manuals. Mitsubishi Electric will not be held liable for damage caused by factors found not to be the cause of Mitsubishi Electric; opportunity loss or lost profits caused by faults in Mitsubishi Electric products; damage, secondary damage, or accident compensation, whether foreseeable or not, caused by special factors; damage to products other than Mitsubishi Electric products; or any other duties.

For safe use

- To use the products given in this publication properly, always read the relevant manuals before beginning operation.
- The products have been manufactured as general-purpose parts for general industries, and are not designed or manufactured to be incorporated in a device or system used in purposes related to human life.
- Before using the products for special purposes such as nuclear power, electric power, aerospace, medicine or passenger-carrying vehicles, consult with Mitsubishi Electric.
- The products have been manufactured under strict quality control. However, when installing the products where major accidents or losses could occur if the products fail, install appropriate backup or fail-safe functions in the system.

Creating Solutions Together.



Low-voltage Power Distribution Products



Transformers, Med-voltage Distribution Products



Power Monitoring and Energy Saving Products



Power (UPS) and Environmental Products



Compact and Modular Controllers



Servos, Motors and Inverters



Visualization: HMIs



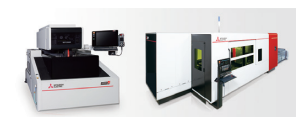
Edge Computing Products



Numerical Control (NC)



Collaborative and Industrial Robots



Processing machines: EDM, Lasers



SCADA, analytics and simulation software

Mitsubishi Electric's product lineup, from various controllers and drives to energy-saving devices and processing machines, all help you to automate your world. They are underpinned by software, innovative data monitoring, and modelling systems supported by advanced industrial networking and Edgecross IT/OT connectivity. Together with a worldwide partner ecosystem, Mitsubishi Electric factory automation (FA) has everything to make IoT and Digital Manufacturing a reality.

With a complete portfolio and comprehensive capabilities that combine synergies with diverse business units, Mitsubishi Electric provides a one-stop approach to how companies can tackle the shift to clean energy and energy conservation, carbon neutrality and sustainability, which are now a universal requirement of factories, buildings, and social infrastructure.

We at Mitsubishi Electric FA are your solution partners waiting to work with you as you take a step toward the realization of sustainable manufacturing and society through the application of automation. Let's automate the world together!

Sales office

MITSUBISHI ELECTRIC Factory Automation Global Website

► Locations Worldwide

www.MitsubishiElectric.com/fa/about-us/overseas/



Mitsubishi Electric's e-F@ctory concept utilizes both FA and IT technologies, to reduce the total cost of development, production and maintenance, with the aim of achieving manufacturing that is a "step ahead of the times". It is supported by the e-F@ctory Alliance Partners covering software, devices, and system integration, creating the optimal e-F@ctory architecture to meet the end users needs and investment plans.



MITSUBISHI ELECTRIC CORPORATION

HEAD OFFICE: TOKYO BLDG., 2-7-3, MARUNOUCHI, CHIYODA-KU, TOKYO 100-8310, JAPAN